

Erratum

Erratum to “Molecular Responses of Human Retinal Cells to Infection with Dengue Virus”

Jillian M. Carr,¹ Liam M. Ashander ,² Julie K. Calvert,¹ Yuefang Ma ,² Amanda Aloia,³ Gustavo G. Bracho,¹ Soon-Phaik Chee,⁴ Binoy Appukuttan,² and Justine R. Smith ²

¹*Microbiology & Infectious Diseases, Flinders University School of Medicine, Rm 5D-316, 1 Flinders Drive, Bedford Park, Adelaide, SA 5042, Australia*

²*Eye & Vision Health, Flinders University School of Medicine, Rm 4E-431, 1 Flinders Drive, Bedford Park, Adelaide, SA 5042, Australia*

³*Flinders Centre for Innovation in Cancer, Flinders University School of Medicine, 1 Flinders Drive, Bedford Park, Adelaide, SA 5042, Australia*

⁴*Ocular Inflammation and Immunology Service, 11 Third Hospital Avenue, Singapore National Eye Centre, Singapore 168751*

Correspondence should be addressed to Justine R. Smith; justine.smith@flinders.edu.au

Received 18 September 2018; Accepted 19 September 2018; Published 23 December 2018

Copyright © 2018 Jillian M. Carr et al. This is an open access article distributed under the Creative Commons Attribution License, which permits unrestricted use, distribution, and reproduction in any medium, provided the original work is properly cited.

In the article titled “Molecular Responses of Human Retinal Cells to Infection with Dengue Virus,” [1] there was an error in the first graph in Figure 2(d). The numbers on the y -axis were incorrect. This error occurred during the production process. The correct figure is shown below.

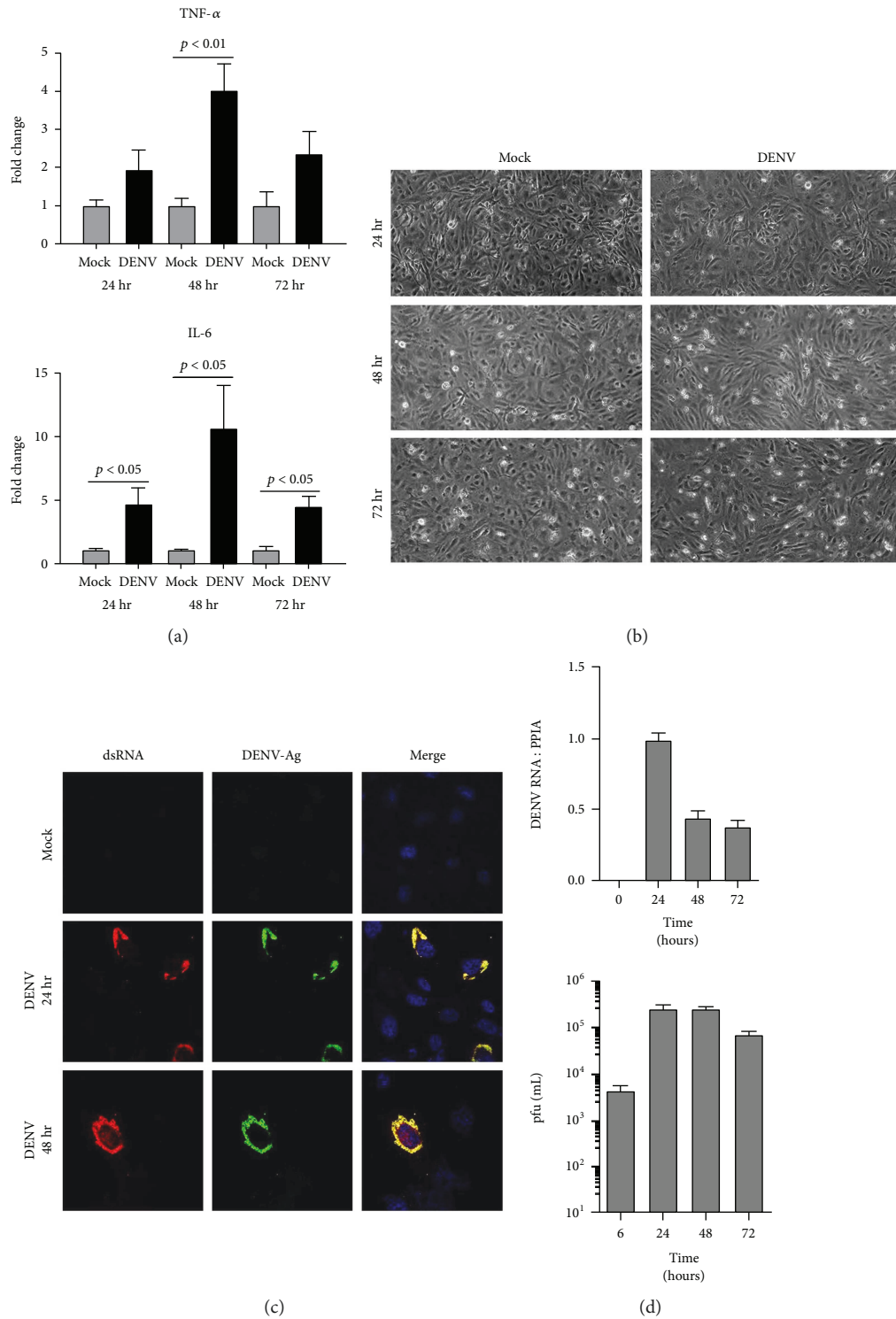


FIGURE 2: Infection of human retinal endothelial cells with DENV; viral strain = Mon601; multiplicity of infection = 1; evaluated time points postinoculation = 6, 24, 48, and 72 hours (hr). (a) Graphs showing relative expression of tumor necrosis factor- α (TNF- α) and interleukin-6 (IL-6) transcripts in DENV-infected endothelial cells versus mock-infected cells. Reference genes were glyceraldehyde-3-phosphate dehydrogenase and TATA-binding protein. Bars represent mean relative expression, with error bars showing standard deviation. $n = 3$ cultures/condition. Data were analyzed by two-tailed Student's t -test. (b) DENV-infected and mock-infected endothelial cells viewed by light microscopy. Original magnification = 100x. (c) DENV- and mock-infected endothelial cells immunolabeled to detect double-stranded RNA (dsRNA) and DENV antigen (Ag). Alexa Fluor 555 (red) and Alexa Fluor 488 (green) and with Hoechst 33342 nuclear counterstain (blue). Original magnification: 630x. (d) Graphs of copy number of DENV RNA for DENV-infected endothelial monolayers and plaque-forming units (pfu) for culture supernatant collected from infected cells. $n = 3$ cultures/condition. Bars represent DENV RNA copy number (relative to cellular peptidylprolyl isomerase A (PPIA)) or mean pfu/mL, with error bars showing standard deviation.

References

- [1] J. M. Carr, L. M. Ashander, J. K. Calvert et al., "Molecular responses of human retinal cells to infection with dengue virus," *Mediators of Inflammation*, vol. 2017, Article ID 3164375, 16 pages, 2017.



Hindawi

Submit your manuscripts at
www.hindawi.com

