

## Research Article

# Accumulation of $\alpha$ -Synuclein in Cerebellar Purkinje Cells of Diabetic Rats and Its Potential Relationship with Inflammation and Oxidative Stress Markers

Volkan Solmaz,<sup>1</sup> Hatice Köse Özlece,<sup>1</sup> Hüseyin Avni Eroglu,<sup>2</sup> Hüseyin Aktuğ,<sup>3</sup> Oytun Erbaş,<sup>4</sup> and Dilek Taşkıran<sup>5</sup>

<sup>1</sup>Department of Neurology, Trakya University Faculty of Medicine, Edirne, Turkey

<sup>2</sup>Department of Physiology, Kafkas University Faculty of Medicine, Kars, Turkey

<sup>3</sup>Department of Histology and Embryology, Ege University Faculty of Medicine, Izmir, Turkey

<sup>4</sup>Department of Physiology, Bilim University Faculty of Medicine, Istanbul, Turkey

<sup>5</sup>Department of Physiology, Ege University Faculty of Medicine, Izmir, Turkey

Correspondence should be addressed to Dilek Taşkıran; dilek.taskiran@ege.edu.tr

Received 29 August 2016; Accepted 20 December 2016; Published 4 January 2017

Academic Editor: Mamede de Carvalho

Copyright © 2017 Volkan Solmaz et al. This is an open access article distributed under the Creative Commons Attribution License, which permits unrestricted use, distribution, and reproduction in any medium, provided the original work is properly cited.

**Objective.** The present study was conducted to evaluate the relationship between plasma oxidative stress markers such as malondialdehyde (MDA) and glutathione (GSH), inflammatory marker pentraxin-3 (PTX3), and cerebellar accumulation of  $\alpha$ -synuclein in streptozotocin- (STZ-) induced diabetes model in rats. **Methods.** Twelve rats were included in the study. Diabetes ( $n = 6$ ) was induced with a single intraperitoneal injection of streptozotocin (STZ, 60 mg/kg). Diabetes was verified after 48 h by measuring blood glucose levels. Six rats served as controls. Following 8 weeks, rats were sacrificed for biochemical and immunohistochemical evaluation. **Results.** Plasma MDA levels were significantly higher in diabetic rats when compared with the control rats ( $p < 0.01$ ), while plasma GSH levels were lower in the diabetic group than in the control group ( $p < 0.01$ ). Also, plasma pentraxin-3 levels were statistically higher in diabetic rats than in the control rats ( $p < 0.01$ ). The analysis of cerebellar  $\alpha$ -synuclein immunohistochemistry showed a significant increase in  $\alpha$ -synuclein immunoreactivity in the diabetic group compared to the control group ( $p < 0.01$ ). **Conclusion.** Due to increased inflammation and oxidative stress in the chronic period of hyperglycemia linked to diabetes, there may be  $\alpha$ -synuclein accumulation in the cerebellum and the plasma PTX3 levels may be assessed as an important biomarker of this situation.

## 1. Introduction

Diabetes mellitus (DM) is one of the most common metabolic diseases caused by insulin deficiency or resistance [1]. The disease may include all types of systemic involvement with morbidity affected most frequently by neurological complications [2]. In recent years, a growing body of evidence suggests a possible link between type 2 diabetes mellitus (T2DM) and neurodegenerative diseases such as Alzheimer's disease (AD) and Parkinson's disease (PD) [3–5]. In addition, it has been proposed that oxidative stress, advanced glycation end products (AGEs) formation, increased aldose reductase activity, and activated protein kinase C (PKC) have been involved in

the molecular mechanisms underlying neurodegeneration in T2DM [3, 4, 6, 7].

Alpha-synuclein ( $\alpha$ -synuclein), a protein localized to presynaptic terminals, binds synaptic vesicle membranes and contributes to vesicle trafficking and soluble NSF (N-ethylmaleimide sensitive factor) attachment protein receptor (SNARE) complex formation [8–10]. In recent years, several *in vivo* and *in vitro* studies have demonstrated that elevated  $\alpha$ -synuclein levels could lead to its abnormal aggregation and neuronal degeneration [8–10]. Histopathologically,  $\alpha$ -synuclein accumulates in the central nerve system (CNS) to form Lewy bodies in some diseases like idiopathic Parkinson's disease (PD), Lewy body dementia (LBD), and

multisystem atrophy (MSA), called alpha-synucleinopathies [11, 12]. According to these studies,  $\alpha$ -synuclein shows pathological accumulations in many regions of the CNS such as the cerebral cortex, cerebellum, and hippocampus. In addition, a very close relationship between  $\alpha$ -synuclein, inflammation, and oxidative stress has been reported [13, 14].

Pentraxin-3 (PTX3) is an acute phase protein and a member of the pentraxin superfamily, which is recognized for its role in peripheral immunity and vascular inflammation in response to injury. Recently, increased levels of PTX3 in cerebrospinal fluid (CSF) and plasma samples have been found in neurodegenerative disorders such as PD and AD [15].

Although there are several studies that demonstrate biochemical and histopathological changes in the cerebrum including cortex and hippocampus in DM, there is still limited data regarding the relationship between cerebellar  $\alpha$ -synuclein accumulation, oxidative stress, and inflammation in DM. Considering this, the present study was conducted to evaluate plasma oxidative stress markers such as malondialdehyde (MDA) and glutathione (GSH), inflammatory marker PTX3, and cerebellar accumulation of  $\alpha$ -synuclein in streptozotocin- (STZ-) induced DM model in rats.

## 2. Materials and Methods

**2.1. Animals.** Twelve male Sprague-Dawley albino mature rats, 8 weeks of age, weighing 200–220 g, were used in the study. Animals were fed ad libitum and housed in pairs in steel cages in a temperature-controlled environment ( $22 \pm 2^\circ\text{C}$ ) with 12-hour light/dark cycles. The experimental procedures were approved by the local ethics committee (KAUHADYK/2016-060). All animal studies strictly conformed to the animal experiment guidelines of the Committee for Human Care.

**2.2. Chemicals.** All chemicals were purchased from Sigma-Aldrich, Inc. (St. Louis, MO), unless otherwise noted.

**2.3. Experimental Protocol.** Diabetes was induced by intraperitoneal (i.p.) injection of STZ (Sigma-Aldrich, Inc.; Saint Louis, MO, USA) (60 mg/kg in 0.9% NaCl, adjusted to pH 4.0 with 0.2 M sodium citrate) for 6 rats (diabetes group,  $n = 6$ ). Six rats served as control group and received no treatment. Diabetes was verified after 24 hours by evaluating blood glucose levels with the use of glucose oxidase reagent strips (Boehringer Mannheim, Indianapolis). The rats with blood glucose levels 250 mg/dL and higher were included in this study. Eight weeks later, the animals were euthanized and blood samples were collected by cardiac puncture to determine plasma glucose, MDA, GSH, and pentraxin-3 levels. Cerebellums were removed for  $\alpha$ -synuclein immunohistochemistry.

**2.4.  $\alpha$ -Synuclein Immunohistochemistry.** 40  $\mu\text{m}$  thick cross sections were taken with a microtome (Leica MR 2145) from paraformaldehyde-fixed and paraffin-embedded cerebellum tissue. The sections were incubated with  $\text{H}_2\text{O}_2$  (10%) for 30 min to eliminate endogenous peroxidase activity and

blocked with 10% normal goat serum (Invitrogen) for 1 hour at room temperature. Subsequently, sections were incubated in primary antibodies ( $\alpha$ -synuclein, Bioss Inc.; 1/100) for 24 h at  $4^\circ\text{C}$ . Antibody detection was performed with the Histostain-Plus Bulk kit (Invitrogen) against rabbit IgG, and 3,3'-diaminobenzidine (DAB) was used to visualize the final product. All sections were washed in PBS and photographed with an Olympus C-5050 digital camera mounted on an Olympus BX51 microscope. Brown cytoplasmic stained cells were scored as positive for  $\alpha$ -synuclein immunostaining. The number of  $\alpha$ -synuclein (+) cells was assessed by systematically scoring at least 100 Purkinje cells per field in 10 fields of tissue sections at a magnification of 100x.

**2.5. Measurement of Lipid Peroxidation (MDA).** Lipid peroxidation was determined in plasma samples by measuring malondialdehyde (MDA) levels as thiobarbituric acid reactive substances [16]. Briefly, trichloroacetic acid and TBARS (thiobarbituric acid reactive substances) reagent were added to the plasma samples and then mixed and incubated at  $100^\circ\text{C}$  for 60 min. After cooling on ice, the samples were centrifuged at 3000 rpm for 20 min and the absorbance of the supernatant was read at 535 nm. MDA levels were calculated from the standard calibration curve using tetraethoxypropane and expressed as  $\mu\text{M}$ .

**2.6. Measurement of Plasma Glutathione (GSH) Levels.** GSH content in plasma samples was measured spectrophotometrically according to Ellman's method [17]. In this method, thiols interact with 5,5'-dithiobis(2-nitrobenzoic acid) (DTNB) and form a colored anion with maximum peak at 412 nm. GSH levels were calculated from the standard calibration curve and expressed as  $\mu\text{M}$ .

**2.7. Evaluation of Plasma PTX3 Levels.** Plasma pentraxin-3 (PTX3) levels were measured in each 100  $\mu\text{L}$  sample by standard ELISA apparatus at 450 nm using a PTX3 kit (Uscn Life Science Inc., Wuhan, China). PTX3 levels were determined in duplicate according to the manufacturer's guide. The detection range for PTX3 assay was 0.078–5 ng/mL.

**2.8. Statistical Analysis.** Data analyses were performed using statistical software (SPSS for Windows, Version 16, Statistical Package for the Social Sciences, Worldwide Headquarters SPSS Inc., Chicago, IL, USA). Statistical comparisons were completed using the Mann-Whitney  $U$  test. Results are given as mean  $\pm$  SEM. A value of  $p < 0.05$  was considered statistically significant.

## 3. Results

Table 1 shows the alterations in plasma glucose, MDA, GSH, and PTX3 levels in diabetic and control rats. The plasma glucose levels were significantly higher in the STZ-induced diabetic group than in the control group ( $p < 0.0001$ ). The analysis of plasma oxidative stress parameters revealed significant differences between the groups. Plasma MDA levels were significantly higher in diabetic rats when compared with the control rats ( $p < 0.01$ ), while plasma

TABLE 1: Plasma glucose, glutathione (GSH), malondialdehyde (MDA), and pentraxin-3 (PTX3) levels in control and diabetics rats at the end of the study.

	Glucose (mg/dL)	GSH ( $\mu$ M)	MDA ( $\mu$ M)	PTX3 (ng/mL)	$\alpha$ -Synuclein immunoexpression (%)
Control ( $n = 6$ )	98.6 $\pm$ 8.4	13.58 $\pm$ 1.25	0.18 $\pm$ 0.06	1.24 $\pm$ 0.19	3.48 $\pm$ 0.4
Diabetic rats ( $n = 6$ )	485.9 $\pm$ 35.23**	1.76 $\pm$ 0.32*	0.39 $\pm$ 0.02*	2.65 $\pm$ 0.04*	85.62 $\pm$ 5.84**

Data are expressed as mean  $\pm$  SEM.

\* $p < 0.01$ , \*\* $p < 0.0001$ , control group compared with diabetic rats.

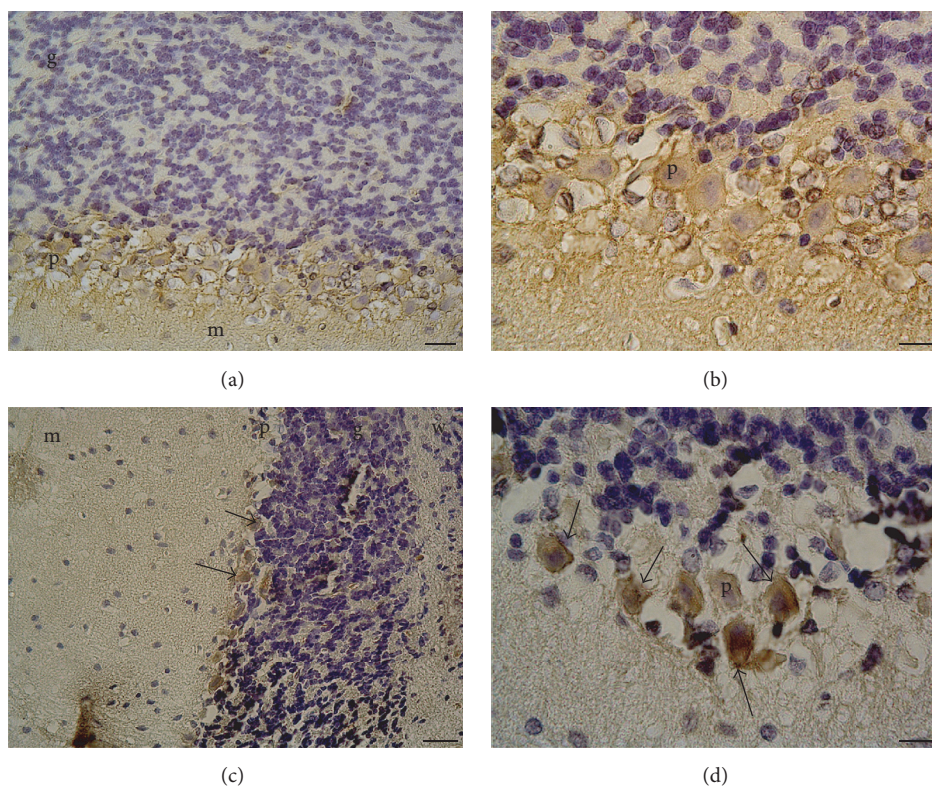


FIGURE 1:  $\alpha$ -Synuclein immunoexpression in Purkinje cells of normal and diabetic rats. (a and b) Control rats cerebellum Purkinje cells ( $\times 20$  and  $100$  magnification, resp.). (c and d) Diabetic rats cerebellum Purkinje cells ( $\times 10$  and  $100$  magnification, resp.). p: Purkinje cell; g: granule cell layer; m: molecular layer; w: white matter. The arrows indicate  $\alpha$ -synuclein (+) cells.

GSH levels were lower in the diabetic group than in the control group ( $p < 0.01$ ). Also, plasma pentraxin-3 levels were statistically higher in diabetic rats than in the control rats ( $p < 0.01$ ). The analysis of cerebellar  $\alpha$ -synuclein immunohistochemistry showed a significant increase in  $\alpha$ -synuclein immunoexpression in the diabetic group compared to the control group ( $p < 0.01$ ) (Figure 1).

#### 4. Discussion

The most important result obtained in our study is that oxidative stress marker (MDA) and inflammatory marker (PTX3) were significantly high in rats with hyperglycemia induced with STZ, and related to this, interestingly,  $\alpha$ -synuclein immunoexpression was greater in the cerebellum of hyperglycemic rats. The present study is the first to show

$\alpha$ -synuclein accumulation in Purkinje cells in the cerebellum of the diabetic rat model.

It is generally accepted that  $\alpha$ -synuclein is found in the presynaptic membrane of neuronal tissues. However, recent studies have suggested that it is found intensely in mitochondria. Although the physiological function of  $\alpha$ -synuclein is not fully understood, it is reported to have probable functions in synaptic plasticity, neurotransmitter release, neuronal differentiation, and regulation of neuronal viability [18, 19]. A variety of studies have shown that  $\alpha$ -synuclein accumulates in Purkinje cells during various neurodegenerative diseases like PD and LBD [20, 21].

In recent years, hyperglycemia and neurodegeneration in the cerebellum have been studied in experimental models [3, 22–24]. In one of these studies, in a diabetic rat model induced with STZ, Baydas et al. found the astrocytic marker



of glial fibrillary acidic protein (GFAP) and S100B levels were higher in hyperglycemic rats and related to this they reported neurodegenerative changes in many CNS regions such as cerebellum, hippocampus, and cerebral cortex [22]. Besides, a significant relationship between oxidative stress, inflammation, and neurodegeneration in DM has been frequently emphasized in recent studies; in fact, this situation has been named type 3 diabetes [25]. Studies related to this have reported increased incidence of Parkinson's disease in diabetic patients [6] and proposed that glycosylation of the  $\alpha$ -synuclein protein due to hyperglycemia causes accumulation of Lewy bodies [26]. Previous experimental studies have mentioned a close relationship between increased oxidative stress and inflammation and accumulation of  $\alpha$ -synuclein. For instance, a study by Wang et al. used ob/ob and db/db mice to create a diabetic model and observed that a single dose of 1-methyl-4-phenyl-1,2,3,6-tetrahydropyridine (MPTP) disrupted the insulin signaling not only in the pancreas and liver but also in the mid-brain. Additionally, they revealed monomeric  $\alpha$ -synuclein accumulation in both the pancreas and the substantia nigra in the midbrain. They proposed that this situation was related to systemic and central inflammation and neurotoxicity linked to hyperglycemia [27]. However, a study by Xie et al. reported that 1-acetyl-6,7-dihydroxyl-1,2,3,4-tetrahydroisoquinoline (ADTIQ) levels were elevated in both STZ-induced diabetic rats and transgenic  $\alpha$ -synuclein gene PD mice model and this elevation was directly related to the accumulation of  $\alpha$ -synuclein. Accordingly, they speculated that the relationship between hyperglycemia and PD might be related to ADTIQ [28]. In accordance with the previous studies, in our study, we observed significantly higher  $\alpha$ -synuclein immunoreactivity in the cerebellum of STZ-induced hyperglycemic rats compared to the control group.

Increased generation of reactive oxygen species (ROS) by hyperglycemia is recognized as a main cause of the clinical complications related to DM. In diabetes, not only overproduction of ROS but also reduced antioxidant defence mechanisms such as impaired GSH metabolism and alterations in antioxidant enzyme activities contribute to pathophysiology of hyperglycemia-induced cellular damage [29, 30]. MDA has been documented as a key biomarker of lipid peroxidation and oxidative stress [29–33]. Increased levels of plasma MDA in diabetics suggest an association between the high glycemic levels and oxidative damage in DM. The elevation in lipid peroxidation is also an indication of failure in cellular antioxidant defense mechanisms such as GSH [29–33]. GSH, a tripeptide, is considered as a biomarker of redox imbalance in all mammalian tissues. It defends cells against oxidative damage by maintaining SH groups of proteins in a reduced state and detoxifying reactive oxygen species (ROS) and also acting as a coenzyme in various enzymatic reactions. There are several clinical and experimental studies revealing the elevated MDA and decreased GSH levels in DM [31–33]. In our study, plasma MDA levels were found to be significantly high in diabetic group whereas GSH levels were diminished compared to control group. In agreement with previous studies, the findings of the present study suggest that exposure to prolonged durations of hyperglycemia may

enhance lipid peroxidation and suppress GSH levels as a result of increased consumption of NADPH due to activation of polyol pathway by glucose.

The acute phase glycoprotein of PTX3 has been previously investigated for its relationship with many chronic diseases including DM [34, 35]. Additionally, it has been reported that the levels of acute phase protein increased in a variety of neurodegenerative diseases [36, 37]. For instance, Lee et al. have observed high plasma PTX3 levels in idiopathic PD patients and found significant correlation between the PTX3 levels and daily life activities and motor functions [38]. According to the findings of the previous studies combined with the results of the current experiments, we can speculate that PTX3, apart from being an acute phase protein, may be considered as a possible biomarker of increased inflammation in the chronic period of systemic and neurodegenerative diseases.

Taken together, to the best of our knowledge, our study is the first to demonstrate  $\alpha$ -synuclein accumulation in the cerebellum and increased plasma PTX3 levels in the STZ-induced diabetes model. In conclusion, due to increased inflammation and neurotoxicity in the chronic period of hyperglycemia linked to diabetes, there may be  $\alpha$ -synuclein accumulation in the cerebellum and the plasma MDA, GSH, and PTX3 levels may be assessed as important biomarkers of this situation. However, future experimental and clinical studies are required to clarify the molecular mechanisms underlying cerebellar neurodegeneration in DM.

## Ethical Approval

The authors declare that all procedures performed in studies involving human participants were in accordance with the ethical standards of the institutional and/or national research committee and with the 1964 Helsinki declaration and its later amendments or comparable ethical standards.

## Competing Interests

The authors declare that there are no competing interests.

## References

- [1] D. Power, "Standards of medical care in diabetes: response to position statement of the American Diabetes Association," *Diabetes Care*, vol. 29, no. 2, p. 476, 2006.
- [2] E. Selvin, C. M. Parrinello, D. B. Sacks, and J. Coresh, "Trends in prevalence and control of diabetes in the United States, 1988–1994 and 1999–2010," *Annals of Internal Medicine*, vol. 160, no. 8, pp. 517–525, 2014.
- [3] A. Nagayach, N. Patro, and I. Patro, "Experimentally induced diabetes causes glial activation, glutamate toxicity and cellular damage leading to changes in motor function," *Frontiers in Cellular Neuroscience*, vol. 8, article 355, 2014.
- [4] S. Yang, C. Xia, S. Li, L. Du, L. Zhang, and Y. Hu, "Mitochondrial dysfunction driven by the LRRK2-mediated pathway is associated with loss of Purkinje cells and motor coordination deficits in diabetic rat model," *Cell Death and Disease*, vol. 5, no. 5, Article ID e1217, 2014.

- [5] O. Ates, S. R. Cayli, E. Altinoz et al., "Neuroprotective effect of mexiletine in the central nervous system of diabetic rats," *Molecular and Cellular Biochemistry*, vol. 286, no. 1-2, pp. 125–131, 2006.
- [6] O. Corti, S. Lesage, and A. Brice, "What genetics tells us about the causes and mechanisms of Parkinson's disease," *Physiological Reviews*, vol. 91, no. 4, pp. 1161–1218, 2011.
- [7] A. Kara, D. Unal, N. Simsek, A. Yucel, N. Yucel, and J. Selli, "Ultra-structural changes and apoptotic activity in cerebellum of post-menopausal-diabetic rats: a histochemical and ultra-structural study," *Gynecological Endocrinology*, vol. 30, no. 3, pp. 226–231, 2014.
- [8] T. F. Outeiro, P. Putcha, J. E. Tetzlaff et al., "Formation of toxic oligomeric  $\alpha$ -synuclein species in living cells," *PLoS ONE*, vol. 3, no. 4, Article ID e1867, 2008.
- [9] A. Iwai, E. Masliah, M. Yoshimoto et al., "The precursor protein of non-A $\beta$  component of Alzheimer's disease amyloid is a presynaptic protein of the central nervous system," *Neuron*, vol. 14, no. 2, pp. 467–475, 1995.
- [10] M. G. Spillantini, M. L. Schmidt, V. M.-Y. Lee, J. Q. Trojanowski, R. Jakes, and M. Goedert, " $\alpha$ -synuclein in Lewy bodies [8]," *Nature*, vol. 388, no. 6645, pp. 839–840, 1997.
- [11] A. B. Singleton, M. Farrer, J. Johnson et al., " $\alpha$ -synuclein locus triplication causes Parkinson's disease," *Science*, vol. 302, no. 5646, p. 841, 2003.
- [12] M.-C. Chartier-Harlin, J. Kachergus, C. Roumier et al., " $\alpha$ -synuclein locus duplication as a cause of familial Parkinson's disease," *Lancet*, vol. 364, no. 9440, pp. 1167–1169, 2004.
- [13] A. Klegeris and P. L. McGeer, "Complement activation by islet amyloid polypeptide (IAPP) and  $\alpha$ -synuclein 112," *Biochemical and Biophysical Research Communications*, vol. 357, no. 4, pp. 1096–1099, 2007.
- [14] S. Fatima, R. Haque, P. Jadia, Shamsuzzama, L. Kumar, and A. Nazir, "Ida-1, the caenorhabditis elegans orthologue of mammalian diabetes autoantigen IA-2, potentially acts as a common modulator between Parkinson's disease and diabetes: role of Daf-2/Daf-16 insulin like signalling pathway," *PLoS ONE*, vol. 9, no. 12, Article ID e113986, 2014.
- [15] I. Rajkovic, A. Denes, S. M. Allan, and E. Pinteaux, "Emerging roles of the acute phase protein pentraxin-3 during central nervous system disorders," *Journal of Neuroimmunology*, vol. 292, pp. 27–33, 2016.
- [16] C. Demougeot, C. Marie, and A. Beley, "Importance of iron location in iron-induced hydroxyl radical production by brain slices," *Life Sciences*, vol. 67, no. 4, pp. 399–410, 2000.
- [17] G. L. Ellman, "Tissue sulfhydryl groups," *Archives of Biochemistry and Biophysics*, vol. 82, no. 1, pp. 70–77, 1959.
- [18] G. Liu, C. Zhang, J. Yin et al., " $\alpha$ -Synuclein is differentially expressed in mitochondria from different rat brain regions and dose-dependently down-regulates complex I activity," *Neuroscience Letters*, vol. 454, no. 3, pp. 187–192, 2009.
- [19] V. Narayanan and S. Scarlata, "Membrane binding and self-association of  $\alpha$ -synucleins," *Biochemistry*, vol. 40, no. 33, pp. 9927–9934, 2001.
- [20] F. Mori, Y.-S. Piao, S. Hayashi et al., " $\alpha$ -Synuclein accumulates in Purkinje cells in Lewy body disease but not in multiple system atrophy," *Journal of Neuropathology and Experimental Neurology*, vol. 62, no. 8, pp. 812–819, 2003.
- [21] J. Sebeo, P. R. Hof, and D. P. Perl, "Occurrence of  $\alpha$ -synuclein pathology in the cerebellum of Guamanian patients with parkinsonism-dementia complex," *Acta Neuropathologica*, vol. 107, no. 6, pp. 497–503, 2004.
- [22] G. Baydas, R. J. Reiter, A. Yasar, M. Tuzcu, I. Akdemir, and V. S. Nedzvetskii, "Melatonin reduces glial reactivity in the hippocampus, cortex, and cerebellum of streptozotocin-induced diabetic rats," *Free Radical Biology and Medicine*, vol. 35, no. 7, pp. 797–804, 2003.
- [23] N. G. Ozdemir, F. Akbas, T. Kotil, and A. Yılmaz, "Analysis of diabetes related cerebellar changes in streptozotocin-induced diabetic rats," *Turkish Journal of Medical Sciences*, vol. 46, no. 5, pp. 1579–1592, 2016.
- [24] D. H. Bak, E. Zhang, M.-H. Yi et al., "High  $\omega$ 3-polyunsaturated fatty acids in fat-1 mice prevent streptozotocin-induced Purkinje cell degeneration through BDNF-mediated autophagy," *Scientific Reports*, vol. 5, Article ID 15465, 2015.
- [25] J. A. Santiago and J. A. Potashkin, "Shared dysregulated pathways lead to Parkinson's disease and diabetes," *Trends in Molecular Medicine*, vol. 19, no. 3, pp. 176–186, 2013.
- [26] H. Braak, K. Del Tredici, U. Rüb, R. A. I. de Vos, E. N. H. Jansen Steur, and E. Braak, "Staging of brain pathology related to sporadic Parkinson's disease," *Neurobiology of Aging*, vol. 24, no. 2, pp. 197–211, 2003.
- [27] L. Wang, Y.-Q. Zhai, L.-L. Xu et al., "Metabolic inflammation exacerbates dopaminergic neuronal degeneration in response to acute MPTP challenge in type 2 diabetes mice," *Experimental Neurology*, vol. 251, pp. 22–29, 2014.
- [28] B. Xie, F. Lin, K. Ullah et al., "A newly discovered neurotoxin ADTIQ associated with hyperglycemia and Parkinson's disease," *Biochemical and Biophysical Research Communications*, vol. 459, no. 3, pp. 361–366, 2015.
- [29] F. Giacco and M. Brownlee, "Oxidative stress and diabetic complications," *Circulation Research*, vol. 107, no. 9, pp. 1058–1070, 2010.
- [30] B. K. Tiwari, K. B. Pandey, A. B. Abidi, and S. I. Rizvi, "Markers of oxidative stress during diabetes mellitus," *Journal of Biomarkers*, vol. 2013, Article ID 378790, 8 pages, 2013.
- [31] N. Fatima, S. M. Faisal, S. Zubair et al., "Role of pro-inflammatory cytokines and biochemical markers in the pathogenesis of type 1 diabetes: correlation with age and glycemic condition in diabetic human subjects," *PLOS ONE*, vol. 11, no. 8, Article ID e0161548, 2016.
- [32] O. Erbaş, F. Oltulu, M. Yılmaz, A. Yavaşoğlu, and D. Taşkıran, "Neuroprotective effects of chronic administration of levetiracetam in a rat model of diabetic neuropathy," *Diabetes Research and Clinical Practice*, vol. 114, pp. 106–116, 2016.
- [33] S. A. Moussa, "Oxidative stress in diabetes mellitus," *Romanian Journal of Biophysics*, vol. 18, pp. 225–236, 2008.
- [34] W. Zhou and W. Hu, "Serum and vitreous pentraxin 3 concentrations in patients with diabetic retinopathy," *Genetic Testing and Molecular Biomarkers*, vol. 20, no. 3, pp. 149–153, 2016.
- [35] H. S. Yang, J. E. Woo, S. J. Lee, S. H. Park, and J. M. Woo, "Elevated plasma pentraxin 3 levels are associated with development and progression of diabetic retinopathy in Korean patients with type 2 diabetes mellitus," *Investigative Ophthalmology and Visual Science*, vol. 55, no. 9, pp. 5989–5997, 2014.
- [36] M. Ceylan, O. F. Bayraktutan, S. Becel, Ö. Atis, A. Yalcin, and D. Kotan, "Serum levels of pentraxin-3 and other inflammatory biomarkers in migraine: association with migraine characteristics," *Cephalalgia*, vol. 36, no. 6, pp. 518–525, 2015.
- [37] A. Shindo, T. Maki, E. T. Mandeville et al., "Astrocyte-derived pentraxin 3 supports blood-brain barrier integrity under acute phase of stroke," *Stroke*, vol. 47, no. 4, pp. 1094–1100, 2016.

- [38] H.-W. Lee, J. Choi, and K. Suk, "Increases of pentraxin 3 plasma levels in patients with Parkinson's disease," *Movement Disorders*, vol. 26, no. 13, pp. 2364–2370, 2011.





**Hindawi**  
Submit your manuscripts at  
<https://www.hindawi.com>

