

## Research Article

# Ultrasonography Comparison of Diaphragm Morphological Structure and Function in Young and Middle-Aged Subjects with and without Non-Specific Chronic Low Back Pain: A Case-Control Study

Wenwu Xiao <sup>1</sup>, Fuming Zheng <sup>1</sup>, Ke Dong <sup>1</sup>, Zhuangfu Wang,<sup>2</sup> Yao Zu <sup>1</sup>,  
and Chuhuai Wang <sup>1</sup>

<sup>1</sup>Department of Rehabilitation Medicine, The First Affiliated Hospital, Sun Yat-Sen University, Guangzhou 510080, China

<sup>2</sup>Department of Rehabilitation Medicine, The Third Affiliated Hospital, Sun Yat-Sen University, Guangzhou 510080, China

Correspondence should be addressed to Chuhuai Wang; wangchuh@mail.sysu.edu.cn

Received 14 July 2022; Revised 6 November 2022; Accepted 25 November 2022; Published 16 December 2022

Academic Editor: Vahid Rakhshan

Copyright © 2022 Wenwu Xiao et al. This is an open access article distributed under the Creative Commons Attribution License, which permits unrestricted use, distribution, and reproduction in any medium, provided the original work is properly cited.

**Background.** It is reported that impaired postural control in patients with non-specific chronic low back pain (NCLBP) was associated with “core” trunk muscle incoordination. However, as the diaphragm is an important component of the “core” deep trunk muscle group, we still know little about the potential relationship between diaphragm dysfunction and NCLBP. **Objectives.** This case-control study is intended to investigate the changes of diaphragm morphological structure and function in young and middle-aged subjects with and without NCLBP by ultrasound evaluation and its possible validity in predicating the occurrence of NCLBP. **Methods.** 31 subjects with NCLBP (NCLBP group) and 32 matched healthy controls (HC group) were enrolled in this study. The diaphragm thickness at the end of inspiration ( $T^{\text{ins}}$ ) or expiration ( $T^{\text{exp}}$ ) during deep breathing was measured through B-mode ultrasound, and the diaphragm excursion ( $T^{\text{exc}}$ ) was estimated at deep breathing through M-mode ultrasound. The diaphragm thickness change rate ( $T^{\text{rate}}$ ) was calculated by the formula:  $T^{\text{rate}} = (T^{\text{ins}} - T^{\text{exp}})/T^{\text{exp}} \times 100\%$ . **Results.** Compared with the HC group, the NCLBP group had a significant smaller degree of  $T^{\text{ins}}$  ( $t = -3.90, P < 0.001$ ),  $T^{\text{exp}}$  ( $Z = -2.79, P = 0.005$ ), and  $T^{\text{rate}}$  ( $t = -2.03, P = 0.047$ ). However, there was no statistical difference in  $T^{\text{exc}}$  between the two groups ( $t = -1.42, P = 0.161$ ). The binary logistic regression analysis indicated that  $T^{\text{rate}}$  (OR = 16.038,  $P = 0.014$ ) and  $T^{\text{exp}}$  (OR = 7.714,  $P = 0.004$ ) were potential risk factors for the occurrence of NCLBP. **Conclusions.** The diaphragm morphological structure and function were changed in young and middle-aged subjects with NCLBP, while the diaphragm thickness change rate ( $T^{\text{rate}}$ ) and diaphragm thickness at the end of expiration ( $T^{\text{exp}}$ ) may be conducive to the occurrence of NCLBP. Furthermore, these findings may suggest that abnormal diaphragm reeducation is necessary for the rehabilitation of patients with NCLBP.

## 1. Introduction

Low back pain is a leading contributor to global disease burden [1, 2], which is the first leading cause of years lived with disability (YLDs) [3]. Approximately 90% of chronic low back pain are unclear etiologically and lack effective therapies [4, 5], which is deemed as non-specific chronic low back pain (NCLBP) [4, 6]. It is worth noting that the epidemiological evidence shows a rising incidence of NCLBP among young and middle-aged people [1].

An increasing number of studies suggested that the functional incoordination of the “core” trunk muscles and the postural control disorder were the important causes of low back pain [7, 8]. The diaphragm muscle, as one of the important components of the “core” deep trunk muscles as well as the main respiratory muscle, plays a key role in both respiratory and postural control [9–11]. However, whether there is a potential relationship between diaphragm dysfunction and low back pain is rarely reported, and the pathogenic mechanisms involved in it remain poorly understood.

From a clinical treatment perspective, several previous studies have validated that diaphragm exercise could effectively relieve the pain symptoms, strengthen muscle activity, enhance body stability, and increase reliance on back proprioceptive signals in patients with low back pain [12, 13]. In addition, previous studies also have manifested that diaphragm of low back pain patients is vulnerable to fatigue [14] and the characteristics of that is altered [15, 16]. In conclusion, these studies indicated that if the human body could not balance the diaphragm breathing demands and postural control, there would be destabilization of the spine, which leads to low back pain [17]. Besides, it also revealed that the diaphragm morphological structure and function might be changed in low back pain patients.

Ultrasound is a convenient and reliable tool to measure the static and dynamic diaphragm morphological structure and function during breathing [16, 18–20]. However, the application of diaphragm ultrasound in subjects with low back pain is seldom, and the results of relevant studies are inconsistent, i.e., no significant change of diaphragm thickness and excursion between NCLBP and asymptomatic subjects in one study [16], while the thinner diaphragm thickness in patient with lumbopelvic pain compared with asymptomatic subjects in another study [21]. Therefore, it deserves to future explore the changes of diaphragm morphological structure and function and the possible pathogenic mechanisms of that in subjects.

Above all, this case-control study is designed to investigate the diaphragm morphological and functional changes in patients with NCLBP and its potential role in the development of NCLBP by ultrasound evaluation. Through this endeavor, the study would shed light on revealing the etiology of NCLBP, optimizing rehabilitation treatment and drawing more clinical attention of NCLBP.

## 2. Methods

**2.1. Study Design and Settings.** This case-control study was approved and supervised by the Ethics Committee of the First Affiliated Hospital of Sun Yat-Sen University. The register number is [2021]079. All participants should sign and informed the consents before ultrasound examination, and the Helsinki declaration was considered [22]. To maintain the quality of the report, this study was conducted according to the STROBE checklist [23] and also referred to the CONSORT checklist to some extent [24].

**2.2. Participants.** We recruited participants from April 2021 to January 2022 via advertisement posted at the rehabilitation department of the First Affiliated Hospital of Sun Yat-Sen University. The NCLBP group was enrolled based on the following criteria: the participants should meet the medical diagnostic standards for NCLBP [4], aged 18~59 years with low back pain between the twelfth rib and the gluteus sulcus, pain intensity between 2~5/10 according to the numerical rating scale (NRS) [13, 15, 25], and symptoms lasting for at least 3 months. For the healthy control (HC) group, participants were matched with the

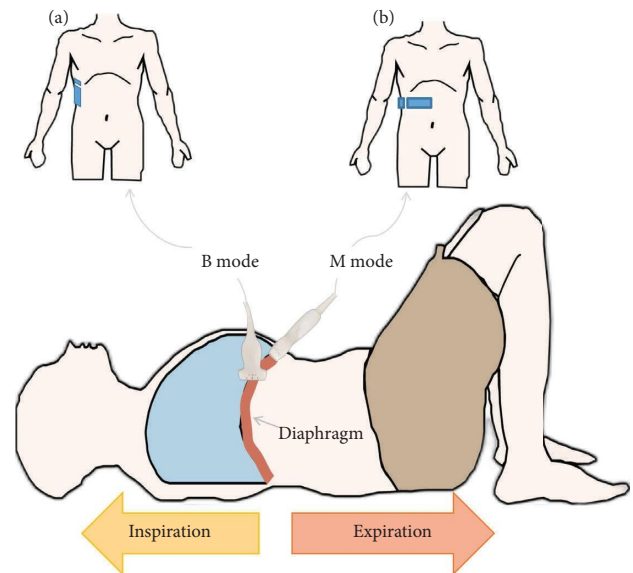


FIGURE 1: Sketch map of diaphragm measurement (a) Diaphragm thickness measurement (b) Diaphragm excursion measurement.

NCLBP group for demographic data such as sex, educational status, height, weight, age, and so on and with no symptom of low back pain.

The exclusion criteria were considered as follows. First, participants with smoking and chronic respiratory diseases (bronchial asthma, tuberculosis, chronic obstructive pulmonary disease, etc.) were excluded. Next, we excluded participants who had a history of spine or thoracoabdominal surgery and experienced kinesiotherapy frequently in the past 3 months [13]. In addition, participants with pregnancy and body mass index (BMI) > 31 kg/m<sup>2</sup> were eliminated [26]. Finally, we excluded participants who had conditions that made them unable to cooperate with the examination (cognitive disorder, psychosis, current self-harm or suicidal ideation, major depression or anxiety, etc.) [25].

**2.3. Instruments and Measures.** The diaphragm thickness and excursion were examined by an experienced ultrasound doctor through a high-property ultrasound equipment (KONICA MINOLTA, SONIMAGE HS1, Tokyo, Japan). The examination methods and skills were carried out according to the consensus and expert recommendations of the European Society of Intensive Care Medicine [27].

We chose a linear array high-frequency probe (LINER PROBE, L18-4, 18 MHz) to assess the diaphragm thickness. The subjects laid supine on the examination bed and the ultrasound probe was located in the anterior axillary line between the subject's 8~9 ribs (Figure 1(a)). The three parallel tissues were clearly visible in 2-dimensional B-mode ultrasound consisting of two hyper-echoic pleural and peritoneal layers and an intermediate muscle layer. The distance between the pleural and peritoneal layers was the thickness of the diaphragm which was measured at the end of deep inspiration ( $T^{ins}$ )/expiration ( $T^{exp}$ ) in our research, respectively [16] (Figure 2(a)). The diaphragm thickness

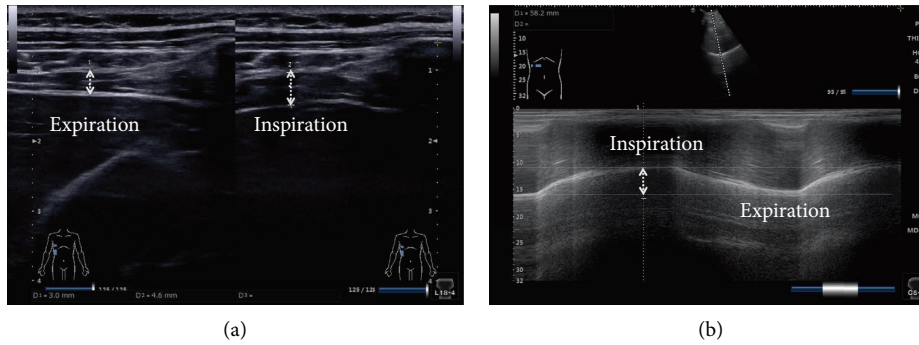


FIGURE 2: Ultrasound measurements of diaphragm. (a) Diaphragm thickness in B-mode. (b) Diaphragm excursion in M-mode.

change rate ( $T^{\text{rate}}$ ) was computed by the formula:  $T^{\text{rate}} = (T^{\text{ins}} - T^{\text{exp}})/T^{\text{exp}} * 100\%$  [20, 28].

We selected a curved array of low-frequency probe (CONVEX PROBE, C5-2, 4 MHz) to evaluate the diaphragm excursion during deep breathing. We placed the probe at the bottom edge of the low rib cage between the anterior axillary line and the midclavicular line (the probe could also be slid from the navel to the lower right edge of the low ribs, with a higher rate of gain across the liver incision diaphragm) (Figure 1(b)). The highlighted diaphragm was legibly visible in B-mode window, and the movement of diaphragm could be easily obtained during the breathing cycle. Subsequently, we chose a measurement line to make the ultrasound beam perpendicular to the diaphragm under M-mode ultrasound which could evidently reveal the diaphragm excursion, moving the probe downward when inhalation, and the opposite when exhalation. The vertical distance between the highest plane and the lowest plane of the curve was the degree of diaphragm excursion [29, 30] (Figure 2(b)).

During the ultrasound examination, the participants were instructed to control their breathing. They need to breathe as deeply as possible and then exhale as slowly and completely as needed during the deep breathing. Also, subjects were verbally encouraged at each measurement.

**2.4. Bias.** We introduced the details of the examination to participants for better cooperation and to minimize the measurement bias. The ultrasound examiner was blinded to group allocation to reduce potential bias. Moreover, in order to reduce the error, we used the same measurement method, evaluated the diaphragm thickness and excursion 3 times, and took the average value as the final statistical measurement results.

**2.5. Sample Size Calculation.** The sample size calculation was accomplished by  $G * \text{Power}$  (version 3.1.9.4). Six individuals with NCLBP ( $2.43 \pm 0.56$  mm) and six healthy subjects ( $2.85 \pm 0.50$  mm), considering the mean difference variables and standard deviation (MD  $\pm$  SD) of  $T^{\text{exp}}$  was obtained between two groups in the pilot study. Then, two-sided alternative hypothesis, effect size of 0.79, an alpha of 0.05, a power of 0.80, and the allocation ratio (N2/N1) of 1 were inputted to compute the sample size. In this regard, 27

subjects in each group were needed for this study. Considering a 20% dropout rate, the total sample size was approximately 64 and 32 subjects per group.

**2.6. Statistical Analysis.** All data were analyzed by SPSS 20.0 (SPSS Inc., Chicago, IL, USA), and the results were considered statistically significant when the  $P$  value was lower than 0.05.

We first tested normality of the continuous variables data. Subsequently, the results were expressed as mean  $\pm$  standard deviation (MD  $\pm$  SD) and tested by independent-sample  $t$ -test when the data distributions fit normal curve ( $P \geq 0.05$ ) such as the indexes of age, weight, BMI,  $T^{\text{inx}}$ ,  $T^{\text{rate}}$ , and  $T^{\text{exc}}$ . When the data did not fit a normal curve ( $P < 0.05$ ), results were expressed as median (interquartile range: 25%–75%) and tested by rank sum test (Mann–Whitney  $U$  test) such as the indexes of height and  $T^{\text{exp}}$ .

For categorical data, the indexes of sex/pain duration time were tested by the chi-square test ( $\chi^2$ ) and education level was tested by Fisher's exact test to calculate the statistics of the two groups.

Binary logistic regression analysis was used to analyze the possible factors for the occurrence of NCLBP after considering the multiple collinearity problem. The method of electing variables in the equation was based on toward to (toward: LR) maximum likelihood estimation. Age, sex, BMI, height, weight,  $T^{\text{ins}}$ ,  $T^{\text{exp}}$ ,  $T^{\text{rate}}$ , and  $T^{\text{exc}}$  were included as independent variables, and NCLBP (yes/no) was included as a dependent variable. The significance of associations was evaluated at  $P < 0.05$  with 95% confidence interval (CI) and odds ratio (OR).

Besides, the intraclass correlation coefficient (ICC) was obtained through reliability analysis (two-way mixed, absolute agreement, 95% confidence interval), the standard error measurement (SEM) was calculated as  $\text{SEM} = \text{SD} \times \sqrt{1 - \text{ICC}}$ , and the minimum detectable change (MDC) was calculated as  $\text{MDC} = 1.96 \times \sqrt{2} \times \text{SEM}$  according to previous study [31, 32].

### 3. Results

**3.1. Demographic Characteristics.** Sixty-three participants (31 subjects in the NCLBP group and 32 subjects in the HC group) met the criteria and were finally enrolled. The baseline characteristics such as sex, age, weight, height, BMI,

TABLE 1: Baseline characteristics of subject's data.

	NCLBP group (N = 31)	HC group (N = 32)	$t/\chi^2/Z$	P value	95% CI
Age (years)	30.51 ± 6.05	29.13 ± 5.68	-0.94	0.350 <sup>a</sup>	(-1.56~4.35)
BMI (kg/m <sup>2</sup> )	21.57 ± 2.55	22.27 ± 3.20	-0.96	0.343 <sup>a</sup>	(-2.16~0.76)
Height (cm)	167.00 (162.00-173.00)	166.5 (160.00-176.00)	-0.220	0.826 <sup>b</sup>	NA
Weight (kg)	60.13 ± 9.40	63.18 ± 12.49	-1.10	0.278 <sup>a</sup>	(-8.64~2.52)
Sex (n, %)					
Male	14 (45)	16 (50)			NA
Female	17 (55)	16 (50)	0.15	0.701 <sup>c</sup>	NA
Education level, n (%)					
Junior	0	0			
Senior	2 (6.5)	0 (0)		0.238 <sup>d</sup>	NA
College or higher	29 (93.5)	32 (100)			
Pain duration, n (%)					
3 months to 1 year	8 (25.8)	NA			
1 year to 5 years	21 (67.7)	NA			NA
5 years to 10 years	1 (3.2)	NA			
Over 10 years	1 (3.2)	NA			

<sup>a</sup>t-value; <sup>b</sup>Z-value; <sup>c</sup> $\chi^2$ -value; <sup>d</sup>Fisher's exact test.

and education level had no significant differences between the two groups. The details are illustrated in Table 1.

**3.2. Outcome of the Ultrasound Measured Parameters.** Compared with the HC group, the indexes of  $T^{\text{ins}}$ ,  $T^{\text{exp}}$ , and  $T^{\text{rate}}$  in the NCLBP group decreased in varying degrees, and the differences were statistically significant ( $T^{\text{ins}}$  ( $t = -3.90$ , 95% CI =  $-1.30 \sim -0.42$ ,  $P < 0.001$ ),  $T^{\text{exp}}$  ( $Z = -2.79$ ,  $P = 0.005$ ),  $T^{\text{rate}}$  ( $t = -2.03$ , 95% CI =  $-0.15 \sim 0$ ,  $P = 0.047$ )). However, the index of  $T^{\text{exc}}$  did not show statistically significant difference ( $t = -1.42$ , 95% CI =  $-12.15 \sim 2.09$ ,  $P = 0.161$ ). The details are illustrated in Table 2. In addition, the dispersion graphs of the coordinate distribution for each indicator are shown in Figure 3.

**3.3. Binary Logistic Regression Analysis of the Factors for the Occurrence of NCLBP.** The binary logistic regression analysis results showed a statistically significant effect of  $T^{\text{rate}}$  (OR = 16.038,  $P = 0.014$ , 95% CI 2.815~9138.639) as well as  $T^{\text{exp}}$  (OR = 7.71,  $P = 0.004$ , 95% CI 1.95~30.49) on the occurrence of NCLBP. The rest of the independent variables (BMI, age, height, etc.) did not show a statistically significant effect. The details are illustrated in Table 3.

**3.4. Intrarater Reliability.** In view of three repeated diaphragm assessment of the subjects by the same ultrasound doctor, we calculated the intrarater reliability, and the results showed the following:  $T^{\text{ins}}$  (ICC = 0.940; 95% CI = 0.911~0.961; Cronbach's  $\alpha = 0.979$ ; SEM = 0.011; MDC = 0.031),  $T^{\text{exp}}$  (ICC = 0.906; 95% CI = 0.862~0.930; Cronbach's  $\alpha = 0.967$ ; SEM = 0.036; MDC = 0.101), and  $T^{\text{exc}}$  (ICC = 0.964; 95% CI = 0.946~0.977; Cronbach's  $\alpha = 0.988$ ; SEM = 0.222; MDC = 0.615), respectively.

## 4. Discussion

In this study, the diaphragm thickness and excursion were examined by ultrasound in young and middle-aged subjects with and without NCLBP. We found that (1) the level of  $T^{\text{ins}}$ ,

$T^{\text{exp}}$ , and  $T^{\text{rate}}$  decreased significantly in the NCLBP than HC group ( $P < 0.05$ ); (2) in terms of  $T^{\text{exc}}$ , although no statistical difference was seen between the two groups ( $P > 0.05$ ), we still found that the  $T^{\text{exc}}$  index in the NCLBP group decreased to a certain extent, compared to the HC group; (3) the binary logistic regression analysis showed that the indexes of  $T^{\text{rate}}$  and  $T^{\text{exp}}$  were risk factors of NCLBP, implying that abnormal  $T^{\text{rate}}$  and  $T^{\text{exp}}$  might be conducive to the occurrence of NCLBP.

The diaphragm morphological structure and function are often reflected by measuring diaphragm thickness, its change rate, and excursion during inhalation and exhalation. Although the diaphragm changes rhythmically with breathing, the ultrasound evaluation of the diaphragm still has high accuracy and consistency [16, 33, 34]. This study also found high intrarater reliability (ICC varied from 0.906 to 0.964) which was in line with the other studies [35, 36]. In addition, we found that the total standard deviation of  $T^{\text{ins}}$ ,  $T^{\text{exp}}$ , and  $T^{\text{exc}}$  values (0.967, 0.590, and 14.241, respectively) of the two groups was greater than SEM (0.011, 0.036, and 0.222, respectively) and MDC (0.031, 0.101, and 0.615, respectively). In this regard, the present study presents a good reliability according to the standpoint of Bland and Altman [37].

The diaphragm thickness could be obtained through B and M mode ultrasound, and both of the two modes have high accuracy and reproducibility [27, 38, 39]. Taking into account the fluid interfering effect under M-mode [38], the present study used B-mode ultrasound to measure the diaphragm thickness, which was in line with the studies by Ziaefar et al. [16], Sarwal et al. [20], and Calvo-Lobo et al. [21]. The diaphragm thickness change rate ( $T^{\text{rate}}$ ) could reflect the true diaphragm function and work efficiency [40, 41]. No change or insufficient change of the diaphragm during breathing is an important manifestation of diaphragm paralysis or functional imbalance.

A recent study indicated that participants with NCLBP have a significant decrease of right diaphragm thickness

TABLE 2: Comparison of the index of  $T^{ins}$ ,  $T^{exp}$ ,  $T^{rate}$ , and  $T^{exc}$  between the two groups.

	NCLBP group (N = 31)	HC group (N = 32)	t/Z	P value	95% CI
$T^{ins}$	$3.80 \pm 0.68$	$4.66 \pm 1.02$	-3.90	<0.001 <sup>a#</sup>	(-1.30~-0.42)
$T^{exp}$	2.50 (2.20-2.70)	2.80 (2.32-3.20)	-2.79	0.005 <sup>b#</sup>	NA
$T^{rate}$	$0.57 \pm 0.11$	$0.65 \pm 0.18$	-2.03	0.047 <sup>a#</sup>	(-0.15~0)
$T^{exc}$	$51.37 \pm 11.57$	$56.40 \pm 16.23$	-1.42	0.161 <sup>a</sup>	(-12.15~2.09)

<sup>a</sup>t-value; <sup>b</sup>Z-value; <sup>#</sup>P value of less than 0.05.

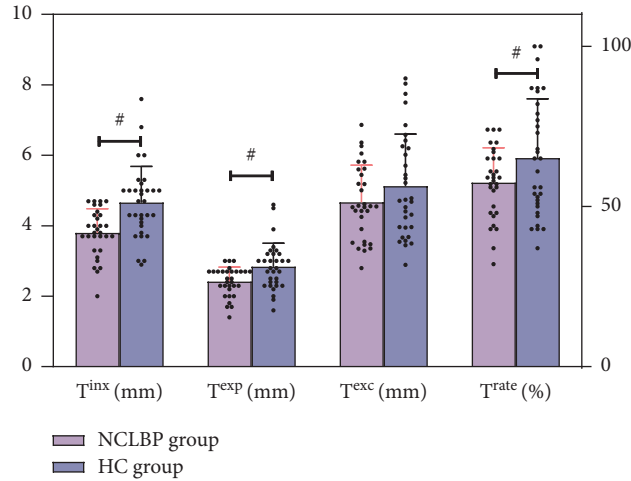


FIGURE 3: The dispersion graph of coordinate distribution for each indicator between two groups. <sup>#</sup>P value of less than 0.05.

TABLE 3: Binary logistic regression analysis of NCLBP factors.

Dependent variable	Independent variable	B	S.E.	Wald	P	OR	95% CI
NCLBP (yes/no)	BMI	-0.244	1.023	0.057	0.811	0.783	0.105~5.823
	Height	-0.016	0.074	0.044	0.834	0.985	0.851~1.139
	Weight	0.012	0.031	0.151	0.698	1.012	0.952~1.077
	Age	-0.023	0.053	0.185	0.667	0.977	0.880~1.085
	Sex	-0.674	0.679	0.984	0.321	0.510	0.135~1.929
	$T^{exc}$	-8.853	5.739	2.379	0.123	0.000	0.000~10.983
	$T^{ins}$	-8.820	5.631	2.453	0.117	0.000	0.000~9.177
	$T^{rate}$	5.078	2.063	6.060	0.014 <sup>#</sup>	16.038	2.815~9138.639
$T^{exp}$	2.043	0.701	8.490	0.004 <sup>#</sup>	7.714	1.952~30.485	

<sup>#</sup>P value of less than 0.05.

change and thickness at expiration [16]. Another study manifested that athletes with lumbopelvic pain have less bilateral diaphragm thickness and lower right diaphragm change rate during inspiration than healthy paired athletes [21]. Consistent with the results of the above research, we also detected that the diaphragm thickness and diaphragm thickness change rate were reduced significantly in the NCLBP group, compared with HC group.

Diaphragm excursion is another important component of diaphragm function detection. It is an indicator to assess whether the body could inhale enough gas to meet the needs during each inspiration, which could reflect the lung ventilation capacity. The intrarater reliability of the diaphragm excursion measurement by M-mode ultrasound in this study

was consistent with Mohan et al.'s study [42], which reported excellent ICC values (0.964 and 0.92, respectively), but inconsistent with Gram et al.'s study (ICC values range from 0.65 to 0.69) [43]. The reason for this distinction between our study and Gram et al.'s study might be due to different interval measurement periods.

Our study found that the diaphragm excursion was somewhat reduced but had no statistical difference in the NCLBP group compared to the HC group, which was consistent with the findings of Ziaefar et al. [16] and Calvo-Lobo et al. [21]. Inconsistent with the present study, a cross-sectional study regarded that the diaphragm excursion and respiratory muscle endurance were lower in the NCLBP group [15]. Considering that the diaphragm excursion is

almost greater in males than in females [30, 44], the reason for this discrepant results between our study and previous study might be due to gender differences (2 males and 66 females in Mohan et al.'s study [15] versus 30 males and 33 females in the present study). In addition, studies examining the diaphragm by MRI had found that the range of diaphragm excursion in the NCLBP group was less than that in the HC group [11, 45], which was also different from our study. There are several reasons for this discrepancy. On the one hand, the movement changes in each part of the diaphragm could be dynamically detect by MRI. However, in the present study, ultrasound only examines the posterior diaphragm activity [16, 46, 47]. On the other hand, the M-mode ultrasound measures the intersection movement of the sampling line between the diaphragm and evaluates the diaphragm movement contraction at a certain point, rather than the overall assessment, which is probably not as sensitive as MRI. Consequently, we considered that the result bias might be caused by different measurement methods (MRI versus ultrasound), as also described by Ziaieifar et al. [16].

Based on our study, the binary logistic regression analysis elucidated that the reduction of  $T^{\text{ate}}$  increases the risk of NCLBP occurrence, which was supported by another study showing that the right diaphragm thickness change might be conducive to the occurrence of NCLBP [16]. Moreover, the present study also found that  $T^{\text{exp}}$  might be a risk factor for the occurrence of NCLBP, which has not been reported previously [15, 16]. Former study identified that diaphragm change rate, as an indicator of respiratory function, could reflect the strength of the diaphragm contraction [14]. In addition, patients with chronic low back pain have weakened abdominal muscles [48, 49], reduced trunk stability and intra-abdominal pressure [50], and uncoordinated movement [51, 52]. The abnormal regulation of intra-abdominal pressure may play a pivotal role in process of NCLBP occurrence. Moreover, patients with chronic low back pain might be associated with respiratory pattern disorder and diaphragm dysfunction [53, 54]. Considering the above views, it is reasonable to believe that diaphragm dysfunction might be associated with the occurrence of low back pain, and the role of the diaphragm could be strengthened during the treatment and reeducation of it, with particular attention to expiratory function.

The present study still has several limitations. Firstly, since only young and middle-aged groups were included in this study, other age grades of NCLBP shall be explored in the future work. Secondly, considering the right diaphragm was more accessible than the left, we only examined the right diaphragm. Bilateral detection of diaphragm may be conducive to comprehensive understanding of the role of diaphragm morphological structure and function changes in subjects with NCLBP. Thirdly, because the affected side (unilateral or bilateral) of NCLBP was not distinguished, the compensation of the healthy side to the pain side might bias the results [55, 56]. Lastly, due to the lack of functional assessment related to postural control, the potential relationship between the diaphragm and postural control is part of our further investigation.

## 5. Conclusion

This study assessed the diaphragm by using ultrasound and found that the young and middle-aged subjects in NCLBP group had a smaller diaphragm thickness at the end of inspiration/expiration and diaphragm thickness change rate during deep breathing, compared with the healthy control group. In addition, the abnormal diaphragm thickness change rate and diaphragm thickness at the end of expiration were potential risk factors of NCLBP occurrence. Although there are limitations in this study, it still has certain clinical significance. This study could provide new insight for the pathogenesis of NCLBP and suggests diaphragm morphological structure and function as a potential approach for assessment and rehabilitation treatment for NCLBP.

## Data Availability

The data used to support the findings of this study are available from the corresponding author upon reasonable request. (Corresponding email; wangchuh@mail.sysu.edu.cn).

## Ethical Approval

This trial has been approved and supervised by the Ethics Committee of the First Affiliated Hospital of Sun Yat-Sen University. The approval number is [2021] 079.

## Disclosure

Wenwu Xiao and Fuming Zheng are the co-first authors.

## Conflicts of Interest

The authors declare that they have no conflicts of interest regarding this study.

## Authors' Contributions

XWW and WCH conceived the study. ZFM and DK performed data collection and statistical analysis. XWW and ZFM drafted the manuscript. WZF and ZY revised the manuscript. All authors read and approved the final manuscript.

## Acknowledgments

The authors would like to sincerely thank the participants of the study. The authors also thank Zifeng Li (the Department of Traditional Chinese Medicine, the First College of Clinical Medical Science, Three Gorges University/Yichang Central People's Hospital, Hubei Province, China) for providing statistical analysis and guidance. This study was supported by the National Natural Science Foundation of China (82172532) and Development Center for Medical Science & Technology National Health Commission of China (DCMST-NHC-2019-AHT-01).

## Supplementary Materials

Supplementary 1: STROBE checklist; Supplementary 2: CONSORT checklist. (*Supplementary Materials*)

## References

- [1] N. N. Knezevic, K. D. Candido, J. W. S. Vlaeyen, J. Van Zundert, and S. P. Cohen, "Low back pain," *Lancet (London, England)*, vol. 398, no. 10294, pp. 78–92, 2021.
- [2] N. E. Foster, J. R. Anema, D. Cherkin et al., "Prevention and treatment of low back pain: evidence, challenges, and promising directions," *The Lancet*, vol. 391, no. 10137, pp. 2368–2383, 2018.
- [3] GBD 2016 Disease and Injury Incidence and Prevalence Collaborators, "Global, regional, and national incidence, prevalence, and years lived with disability for 328 diseases and injuries for 195 countries, 1990–2016: a systematic analysis for the Global Burden of Disease Study 2016," *Lancet*, vol. 390, no. 10100, pp. 1211–1259, 2017.
- [4] C. Maher, M. Underwood, and R. Buchbinder, "Non-specific low back pain," *The Lancet*, vol. 389, no. 10070, pp. 736–747, 2017.
- [5] B. W. Koes, M. W. van Tulder, and S. Thomas, "Diagnosis and treatment of low back pain," *BMJ*, vol. 332, no. 7555, pp. 1430–1434, 2006.
- [6] J. Alleva, T. Hudgins, J. Belous, and A. Kristin Origenes, "Chronic low back pain," *Disease-a-Month*, vol. 62, no. 9, pp. 330–333, 2016.
- [7] F. Emami, A. K. Yoosofinejad, and M. Razeghi, "Correlations between core muscle geometry, pain intensity, functional disability and postural balance in patients with nonspecific mechanical low back pain," *Medical Engineering & Physics*, vol. 60, pp. 39–46, 2018.
- [8] E. Zemková, E. Durinova, A. Dzubera et al., "Simultaneous measurement of centre of pressure and centre of mass in assessing postural sway in healthcare workers with non-specific back pain: protocol for a cross-sectional study," *BMJ Open*, vol. 11, no. 8, Article ID e050014, 2021.
- [9] E. Dulger, S. Bilgin, E. Bulut et al., "The effect of stabilization exercises on diaphragm muscle thickness and movement in women with low back pain," *Journal of Back and Musculoskeletal Rehabilitation*, vol. 31, no. 2, pp. 323–329, 2018.
- [10] E. Szczygiel, J. Blaut, K. Zielonka-Pycka et al., "The impact of deep muscle training on the quality of posture and breathing," *Journal of Motor Behavior*, vol. 50, no. 2, pp. 219–227, 2018.
- [11] P. Kolar, J. Sulc, M. Kyncl et al., "Postural function of the diaphragm in persons with and without chronic low back pain," *Journal of Orthopaedic & Sports Physical Therapy*, vol. 42, no. 4, pp. 352–362, 2012.
- [12] J. I. Kang, D. K. Jeong, and H. Choi, "Effect of exhalation exercise on trunk muscle activity and Oswestry disability index of patients with chronic low back pain," *Journal of Physical Therapy Science*, vol. 28, no. 6, pp. 1738–1742, 2016.
- [13] L. Janssens, A. K. McConnell, M. Pijnenburg et al., "Inspiratory muscle training affects proprioceptive use and low back pain," *Medicine & Science in Sports & Exercise*, vol. 47, no. 1, pp. 12–19, 2015.
- [14] L. Janssens, S. Brumagne, A. K. McConnell, G. Hermans, T. Troosters, and G. Gayan-Ramirez, "Greater diaphragm fatigability in individuals with recurrent low back pain," *Respiratory Physiology & Neurobiology*, vol. 188, no. 2, pp. 119–123, 2013.
- [15] V. Mohan, A. Paungmali, P. Sitilerpisan, U. F. Hashim, M. B. Mazlan, and T. N. Nasuha, "Respiratory characteristics of individuals with non-specific low back pain: a cross-sectional study," *Nursing and Health Sciences*, vol. 20, no. 2, pp. 224–230, 2018.
- [16] M. Ziaefar, J. Sarrafzadeh, S. Noorizadeh Dehkordi, A. M. Arab, H. Haghighatkah, and A. Zendehele Jadehkenari, "Diaphragm Thickness, Thickness Change, and Excursion in Subjects with and without Nonspecific Low Back Pain Using B-Mode and M-Mode Ultrasonography," *Physiother Theory Pract*, vol. 38, no. 13, pp. 1–11, 2021.
- [17] M. D. Smith, A. Russell, and P. W. Hodges, "Disorders of breathing and continence have a stronger association with back pain than obesity and physical activity," *Australian Journal of Physiotherapy*, vol. 52, no. 1, pp. 11–16, 2006.
- [18] F. A. Laghi, M. Saad, and H. Shaikh, "Ultrasound and non-ultrasound imaging techniques in the assessment of diaphragmatic dysfunction," *BMC Pulmonary Medicine*, vol. 21, no. 1, p. 85, 2021.
- [19] D. Marugan-Rubio, J. L. Chicharro, R. Becerro-de-Bengoa-Vallejo et al., "Concurrent validity and reliability of manual versus specific device transcostal measurements for breathing diaphragm thickness by ultrasonography in lumbopelvic pain athletes," *Sensors*, vol. 21, no. 13, p. 4329, 2021.
- [20] A. Sarwal, F. O. Walker, and M. S. Cartwright, "Neuromuscular ultrasound for evaluation of the diaphragm," *Muscle & Nerve*, vol. 47, no. 3, pp. 319–329, 2013.
- [21] C. Calvo-Lobo, J. Almazan-Polo, R. Becerro-de-Bengoa-Vallejo et al., "Ultrasonography comparison of diaphragm thickness and excursion between athletes with and without lumbopelvic pain," *Physical Therapy in Sport*, vol. 37, pp. 128–137, 2019.
- [22] World Medical Association, "Declaration of Helsinki: ethical principles for medical research involving human subjects," *JAMA*, vol. 310, no. 20, pp. 2191–2194, 2013.
- [23] E. von Elm, D. G. Altman, M. Egger, S. J. Pocock, P. C. Gotsche, and J. P. Vandembroucke, "The strengthening the reporting of observational studies in epidemiology (STROBE) statement: guidelines for reporting observational studies," *International Journal of Surgery*, vol. 12, no. 12, pp. 1495–1499, 2014.
- [24] K. F. Schulz, D. G. Altman, and D. Moher, "CONSORT 2010 statement: updated guidelines for reporting parallel group randomized trials," *Annals of Internal Medicine*, vol. 152, no. 11, pp. 726–732, 2010.
- [25] F. Zheng, "The Effect of M-Health-Based Core Stability Exercise Combined with Self-Compassion Training for Patients with Nonspecific Chronic Low Back Pain: A Randomized Controlled Pilot Study," *Pain Ther*, vol. 11, no. 2, 2022.
- [26] M. Terada, K. B. Kosik, R. S. Mccann, and P. A. Gribble, "Diaphragm contractility in individuals with chronic ankle instability," *Medicine & Science in Sports & Exercise*, vol. 48, no. 10, pp. 2040–2045, 2016.
- [27] C. Robba, A. Wong, D. Poole et al., "Basic ultrasound head-to-toe skills for intensivists in the general and neuro intensive care unit population: consensus and expert recommendations of the European Society of Intensive Care Medicine," *Intensive Care Medicine*, vol. 47, no. 12, pp. 1347–1367, 2021.
- [28] M. Umbrello, P. Formenti, D. Longhi et al., "Diaphragm ultrasound as indicator of respiratory effort in critically ill patients undergoing assisted mechanical ventilation: a pilot clinical study," *Critical Care*, vol. 19, no. 1, p. 161, 2015.

- [29] S. R. Ishak and H. M. Sakr, "Diaphragmatic thickness and excursion by lung ultrasound in pediatric chronic pulmonary diseases," *J Ultrasound*, vol. 25, no. 1, pp. 97–102, 2021.
- [30] A. Boussuges, Y. Gole, and P. Blanc, "Diaphragmatic motion studied by m-mode ultrasonography: methods, reproducibility, and normal values," *Chest*, vol. 135, no. 2, pp. 391–400, 2009.
- [31] P. Stratford, "Reliability: consistency or differentiating among subjects?" *Physical Therapy*, vol. 69, no. 4, pp. 299–300, 1989.
- [32] F. J. Villalba, P. O. Policastro, S. Solino et al., "Standard measurement error and minimal detectable change of the Back-PAQ ArgSpan questionnaire: secondary analysis," *Musculoskeletal Science and Practice*, vol. 51, Article ID 102315, 2021.
- [33] G. V. Nekludova and S. N. Avdeev, "Possibilities of ultrasound research of the diaphragm," *Terapevticheskii Arkhiv*, vol. 91, no. 3, pp. 86–92, 2019.
- [34] G. F. Sferrazza Papa, G. M. Pellegrino, F. Di Marco et al., "A review of the ultrasound assessment of diaphragmatic function in clinical practice," *Respiration*, vol. 91, no. 5, pp. 403–411, 2016.
- [35] E. Tenza-Lozano, A. Llamas-Alvarez, E. Jaimez-Navarro, and J. Fernandez-Sanchez, "Lung and diaphragm ultrasound as predictors of success in weaning from mechanical ventilation," *Critical Ultrasound Journal*, vol. 10, no. 1, p. 12, 2018.
- [36] M. Ziaefar, S. Noorizadeh Dehkordi, H. R. Haghghatkhah, J. Sarrafzadeh, A. M. Arab, and A. Zendejdel Jadehkenari, "Intrarater reliability of diaphragm excursion and resting thickness using ultrasound imaging in subjects with non-specific chronic low back pain," *Journal of Chiropractic Medicine*, vol. 21, no. 1, pp. 15–22, 2022.
- [37] J. Martin Bland and D. G. Altman, "Statistical methods for assessing agreement between two methods of clinical measurement," *The Lancet*, vol. 327, no. 8476, pp. 307–310, 1986.
- [38] D. Cohn, J. O. Benditt, S. Eveloff, and F. D. McCool, "Diaphragm thickening during inspiration," *Journal of Applied Physiology*, vol. 83, no. 1, pp. 291–296, 1997.
- [39] J. L. Wait, P. A. Nahormek, W. T. Yost, and D. P. Rochester, "Diaphragmatic thickness-lung volume relationship in vivo," *Journal of Applied Physiology*, vol. 67, no. 4, pp. 1560–1568, 1989.
- [40] E. C. Goligher, F. Laghi, M. E. Detsky et al., "Measuring diaphragm thickness with ultrasound in mechanically ventilated patients: feasibility, reproducibility and validity," *Intensive Care Medicine*, vol. 41, no. 4, pp. 642–649, 2015.
- [41] C. A. Francis, J. A. Hoffer, and S. Reynolds, "Ultrasonographic evaluation of diaphragm thickness during mechanical ventilation in intensive care patients," *American Journal of Critical Care*, vol. 25, no. 1, pp. e1–e8, 2016.
- [42] V. Mohan, H. Uf, and M. Dom, "Reliability of diaphragmatic mobility assessment using a real time ultrasound among non-specific low back pain," *Bangladesh Journal of Medical Science*, vol. 3, pp. 443–447, 2016.
- [43] S. T. Grams, R. von Saltiel, A. F. Mayer et al., "Assessment of the reproducibility of the indirect ultrasound method of measuring diaphragm mobility," *Clinical Physiology and Functional Imaging*, vol. 34, no. 1, pp. 18–25, 2014.
- [44] R. S. Harris, M. Giovannetti, and B. K. Kim, "Normal ventilatory movement of the right hemidiaphragm studied by ultrasonography and pneumotachography," *Radiology*, vol. 146, no. 1, pp. 141–144, 1983.
- [45] P. Vostatek, D. Novak, T. Rychnovsky, and S. Rychnovska, "Diaphragm postural function analysis using magnetic resonance imaging," *PLoS One*, vol. 8, no. 3, Article ID e56724, 2013.
- [46] L. N. Z. Q. Y. Sun, "Chinese Critical Ultrasound Study Group. A preliminary study on the evaluation of diaphragm function by ultrasound in patients with invasive mechanical ventilation," *Zhonghua Nei Ke Za Zhi*, vol. 9, no. 59, pp. 695–699, 2020.
- [47] D. Lee, S. Kim, J. Palta, B. Lewis, P. Keall, and T. Kim, "A retrospective 4D-MRI based on 2D diaphragm profiles for lung cancer patients," *J Med Imaging Radiat Oncol*, vol. 63, no. 3, pp. 360–369, 2019.
- [48] B. Hemborg and U. Moritz, "Intra-abdominal pressure and trunk muscle activity during lifting. II. Chronic low-back patients," *Scandinavian Journal of Rehabilitation Medicine*, vol. 17, no. 1, pp. 5–13, 1985.
- [49] H. Wang, J. Zheng, Z. Fan et al., "Impaired static postural control correlates to the contraction ability of trunk muscle in young adults with chronic non-specific low back pain: a cross-sectional study," *Gait & Posture*, vol. 92, pp. 44–50, 2022.
- [50] K. L. Boyle, J. Olinick, and C. Lewis, "The value of blowing up a balloon," *N Am J Sports Phys Ther*, vol. 5, no. 3, pp. 179–188, 2010.
- [51] D. Vicente-Campos, S. Sanchez-Jorge, P. Terron-Manrique et al., "The main role of diaphragm muscle as a mechanism of hypopressive abdominal gymnastics to improve non-specific chronic low back pain: a randomized controlled trial," *Journal of Clinical Medicine*, vol. 10, no. 21, p. 4983, 2021.
- [52] Y. J. Oh, S. H. Park, and M. M. Lee, "Comparison of effects of abdominal draw-in lumbar stabilization exercises with and without respiratory resistance on women with low back pain: a randomized controlled trial," *Medical Science Monitor*, vol. 26, p. e921295, 2020.
- [53] S. G. Shah, T. Choezom, and G. Prabu Raja, "Comparison of respiratory parameters in participants with and without chronic low back pain," *Journal of Bodywork and Movement Therapies*, vol. 23, no. 4, pp. 894–900, 2019.
- [54] N. Roussel, J. Nijs, S. Truijien, L. Vervecken, S. Mottram, and G. Stassijns, "Altered breathing patterns during lumbopelvic motor control tests in chronic low back pain: a case-control study," *European Spine Journal*, vol. 18, no. 7, pp. 1066–1073, 2009.
- [55] P. Wattananon, S. P. Silfies, and H. K. Wang, "Patients with low back pain use stiffening strategy to compensate for movement control during active prone hip rotation: a cross-sectional study," *Journal of Back and Musculoskeletal Rehabilitation*, vol. 35, no. 2, pp. 373–382, 2022.
- [56] M. Shamsi, M. Mirzaei, and M. Hamedirad, "Comparison of muscle activation imbalance following core stability or general exercises in nonspecific low back pain: a quasi-randomized controlled trial," *BMC Sports Sci Med Rehabil*, vol. 12, no. 1, p. 24, 2020.