

THE FEMALE OF *LUCARACHNE BEEBEI* GERTSCH
(ARANEAE: SYMPHYTOGNATHIDAE)¹

BY ARTHUR M. CHICKERING
Albion College, Albion, Michigan

Miss Elizabeth B. Bryant established the genus *Lucarachne* in 1940 on the basis of both males and females taken in Oriente Province, Cuba, at 1500 feet elevation. She placed the genus, with some hesitation, among the Metinae of the Argiopidae and noted that it appeared to be closely related to *Theridion cidrelicola* Simon from Venezuela, the male of which is now considered to belong to the genus *Lucarachne* and is included in the Family Symphytognathidae. When Dr. Gertsch (1960) described *L. beebei* from males alone he noted that four species of the genus *Lucarachne* are now known as follows: *L. tibialis* Bryant from Cuba; *L. cidrelicola* (Simon) from Venezuela; *L. beebei* Gertsch from Trinidad; *L. palpalis* Kraus from Honduras and Mexico. Dr. Gertsch has recently identified a male *L. beebei* Gertsch from my Panamanian collection of 1936 taken in El Valle. In my collection made in Panama in 1958 numerous specimens of both males and females of this last-named species were found also near El Valle. One of the females has been selected and is described below in accord with my usual procedure.

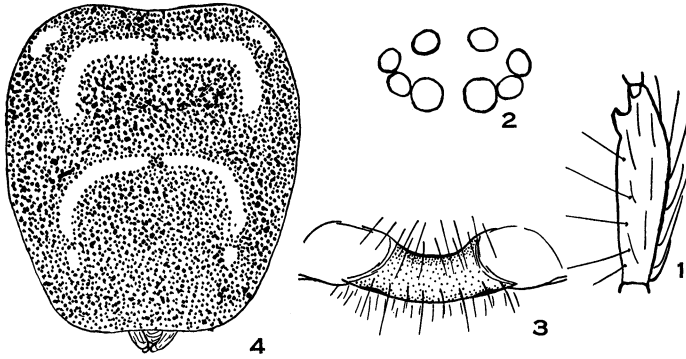
Genus *Lucarachne* Bryant, 1940
Lucarachne beebei Gertsch

Female. Total length 2.05 mm. Carapace 1.012 mm. long, .85 mm. wide opposite interval between second and third coxae where it is widest; well rounded along margin from opposite posterior eyes to posterior border; gently arched from PE to near posterior border with highest part shortly behind those eyes; with few bristles or hairs.

Eyes. Eight in two rows. Region of AME considerably raised into a low blunt tubercle. Seen from above, posterior row nearly straight, anterior row strongly recurved; seen from in front, anterior row slightly procurved, posterior row strongly so, all measured by centers.

¹Published with the aid of a grant from the Museum of Comparative Zoology at Harvard College.

Ratio of eyes AME:ALE::PME:PLE = 10:6::6:7. AME separated from one another by about three fifths of their diameter, from ALE by only a line. PME separated from one another by about five sixths of their diameter, from PLE by about the same distance. LE almost in contact. Central ocular quadrangle wider in front than behind in ratio of about 6:5; nearly as long as wide in front. Clypeus very high; height equal to nearly three times the diameter of AME.



Figures 1-4. External Anatomy of the Female of *Lucarachne beebei* Gertsch. Fig. 1. Left first femur; nearly ventral view. Fig. 2. Eye group of female; somewhat obliquely from above. Fig. 3. Epigynum, from below. Fig. 4. Abdomen; posterior surface.

Chelicerae. Moderately robust, vertical, parallel; fang regularly curved; promargin of fang groove apparently with three teeth the first of which is only a denticle while the other two are fairly robust; retromargin with only one rather small tooth.

Maxillae. Robust; slightly convergent.

Lip. Reaches about two thirds the length of the maxillae. Sternal suture only slightly procurved.

Sternum. Scutiform in general; quite convex; only slightly longer than wide; widest opposite interval between first and second coxae; extends between fourth coxae and terminates in a blunt truncature; fourth coxae separated by nine tenths of their width; posterior end with a cluster of stiff bristles.

Legs. 1243. Width of first patella at "knee" .132 mm., tibial index of first leg 9. Width of fourth patella at "knee" .110 mm., tibial index of fourth leg 10.

	<i>Femora</i>	<i>Patellae</i>	<i>Tibiae</i>	<i>Metatarsi</i>	<i>Tarsi</i>	<i>Totals</i>
	(All measurements in millimeters)					
1.	1.275	.422	1.000	.715	.620	4.032
2.	1.150	.390	.785	.715	.520	3.560
3.	.910	.325	.585	.484	.484	2.788
4.	.970	.340	.715	.715	.585	3.325

Legs with many long slender stiff bristles and few definite long slender spines the most significant of which appear to be the following: each patella with two of these dorsally placed, one near each end of the segment; each tibia has one of these on the dorsal surface near the proximal end; numerous extremely slender spines occur more or less in rows on the ventral surfaces of the femora. The first femur has a distinctive ventral apophysis near the distal end (Fig. 1). Trichobothria are present on the tibiae and metatarsi but the exact numbers and distribution have not been determined.

Abdomen. Ovoid; carried in nearly a perpendicular position; overlaps the carapace considerably; similar to that of *L. palpalis* Kraus (Fig. 4).

Epigynum. Simple; details best shown in Figure 3.

Color in alcohol. Essentially as described for the male by the author of the species; exposed posterodorsal surface essentially as shown in Figure 4.

Collection records. Dr. Gertsch had the male holotype and one male paratype from Trinidad. Collection records in Panama are as follows: a single male from El Valle from my collection of July, 1936, recently identified by Dr. Gertsch; several specimens of both sexes are included in my collection of 1958; these were taken about five miles south of El Valle in January.

REFERENCES CITED

- BRYANT, ELIZABETH, B. 1940. Cuban Spiders in the Museum of Comparative Zoology Bull. Mus. Comp. Zool. at Harvard College, 86 (7): 249-532, 22 pls.
- FORSTER, RAYMOND R. 1958. Spiders of the Family Symphytognathidae from North and South America. American Museum Novitates, No. 1885:1-14.
- GERTSCH, WILLIS J. 1960. Descriptions of American Spiders of the Family Symphytognathidae. American Museum Novitates, No. 1981.
- KRAUS, OTTO 1955. Spinnen aus El Salvador (Arachnoidea, Araneae). Abhand. der Senckenbergischen Naturforschenden Gesellschaft. 493: 1-112. 12 tafeln.



Hindawi

Submit your manuscripts at
<http://www.hindawi.com>

