

## Research Article

# P-Cadherin Expression in Feline Mammary Tissues

Ana Catarina Figueira,<sup>1,2</sup> Ana Sofia Teodósio,<sup>3</sup> Júlio Carvalheira,<sup>2</sup>  
Manuela Lacerda,<sup>3</sup> Augusto de Matos,<sup>2</sup> and Fátima Gärtner<sup>2,4</sup>

<sup>1</sup> Escola Universitária Vasco da Gama (EUVG), Quinta de S. Jorge, Estrada da Conraria, Castelo Viegas, 3040-714 Coimbra, Portugal

<sup>2</sup> Instituto de Ciências Biomédicas Abel Salazar, Universidade do Porto (ICBAS-UP), Rua de Jorge Viterbo Ferreira No. 228, 4050-313 Porto, Portugal

<sup>3</sup> Instituto Português de Oncologia de Coimbra Francisco Gentil, EPE (IPOCFG,EPE) Avenida Bissaya Barreto, No. 98, 3000-075 Coimbra, Portugal

<sup>4</sup> Instituto de Patologia e Imunologia Molecular da Universidade do Porto (IPATIMUP), Rua Dr Roberto Frias s/n, 4200-465 Porto, Portugal

Correspondence should be addressed to Fátima Gärtner, fgartner@ipatimup.pt

Received 17 April 2012; Accepted 13 August 2012

Academic Editor: Giuliano Bettini

Copyright © 2012 Ana Catarina Figueira et al. This is an open access article distributed under the Creative Commons Attribution License, which permits unrestricted use, distribution, and reproduction in any medium, provided the original work is properly cited.

The search for molecular markers in the feline mammary gland, namely, the adhesion molecules belonging to the cadherin family, is useful in the understanding of the development of mammary carcinomas in felines and humans. To study P-cadherin expression in the feline mammary gland, 61 samples of normal ( $n = 4$ ), hyperplastic ( $n = 12$ ), and neoplastic ( $n = 45$ ) feline mammary tissues were examined. In both normal and hyperplastic mammary tissues as well as in benign tumours, P-cadherin immunolabelling was restricted to myoepithelial cells. In malignant tumours, however, there was an aberrant epithelial P-cadherin immunoreexpression in 64.1% ( $n = 25$ ) of cases, with a membranous and/or cytoplasmic pattern of distribution. A statistically significant relationship was seen between epithelial P-cadherin expression and malignant mammary lesions ( $P = 0.0001$ ). In malignant mammary tumours, there was likewise a statistically significant relationship between aberrant P-cadherin immunoreexpression and histological grade ( $P = 0.0132$ ). Aberrant epithelial P-cadherin expression seems to be related to malignancy in the feline mammary gland. To confirm the results of this investigation, further studies with larger samples and follow-up studies are warranted.

## 1. Introduction

Cadherins are elementary membrane glycoproteins that mediate calcium-dependent cellular adhesion [1–4] and play an important role in the formation and maintenance of normal tissue architecture [2–4]. Placental cadherin (P-cadherin) is a classical cadherin [5] expressed by myoepithelial cells [6–11] of the human and canine mammary gland. Changes in P-cadherin expression have been observed and implicated in human breast carcinogenesis [10, 12–17].

Mammary tumours are the third most common neoplasm in felines. They show similarities with human breast tumours, including histological characteristics and clinical evolution, and thus have been proposed as an excellent animal model for the study of mammary carcinogenesis [18].

The present work examines the P-cadherin immunoreactivity in feline mammary tissues and its relationship with the histological grade and type of feline mammary tumours.

## 2. Material and Methods

*2.1. Specimens.* Feline mammary hyperplasias ( $n = 12$ ), benign mammary tumours ( $n = 6$ ), malignant mammary tumours ( $n = 39$ ), and lymph node metastases ( $n = 3$ ) samples were obtained from the archives of the veterinary pathology laboratory of the “Instituto de Ciências Biomédicas Abel Salazar” of Porto University, Portugal, and normal mammary gland samples ( $n = 4$ ) were collected at necropsy in the same laboratory. The mammary gland lesions were

TABLE 1: Histological classification of mammary lesions and their absolute and relative frequencies.

Histological classification	<i>n</i>	%
Hyperplasias ( <i>n</i> = 12)		
Lobular hyperplasia	3	5.26
Fibroadenomatous change	9	15.80
Benign tumours ( <i>n</i> = 6)		
Simple adenoma	2	3.51
Fibroadenoma	3	5.26
Duct papilloma	1	1.75
Malignant tumours ( <i>n</i> = 39)		
Tubulopapillary carcinoma	18	31.58
Solid carcinoma	20	35.09
Cribriform carcinoma	1	1.75

TABLE 2: Histological grade of the malignant epithelial tumours.

Histological type	<i>n</i>	Grade 1 <i>n</i> (%)	Grade 2 <i>n</i> (%)	Grade 3 <i>n</i> (%)
Tubulopapillary carcinoma	18	14 (77.78%)	3 (16.67%)	1 (5.55%)
Solid carcinoma	20	3 (15.00%)	13 (65.00%)	4 (20.00%)
Cribriform carcinoma	1	0 (0.00%)	1 (100.00%)	0 (0.00%)
Total	39	17 (43.59%)	17 (43.59%)	5 (12.82%)

originally collected from surgical excision of feline mammary masses. Tissues were fixed in 10% buffered formalin, dehydrated and embedded in paraffin wax. Sections 3  $\mu$ m thick were cut from each block and stained with both haematoxylin and eosin (HE) for routine histological examination, or processed and stained for immunohistochemistry.

**2.2. Histological Examination.** Lesions were classified by two independent pathologists (FG and ML) from HE stained sections, using the World Health Organization criteria for the classification of tumours in domestic animals [19] (Table 1). If a sample contained more than one type of pattern, the classification was made according to the predominant pattern, as suggested by Misdorp et al., [19].

Malignant epithelial tumours were graded according to the Elston-Ellis modification of the Bloom and Richardson grading system (Nottingham grading system) for human breast carcinomas [20]. The histological grade was based on the assessment of three morphological features: tubule formation, nuclear pleomorphism, and mitotic counts. Each feature was assessed and scored on a scale of 1–3 (slight, moderate, or marked) for a possible total of 3–9 points. For each tumour, the total score indicates the histological grade (1–3). The histological grade was allocated by an arbitrary division of the total points: grade 1 (well differentiated) 3, 4 or 5 points; grade 2 (moderately differentiated) 6 or 7 points; and grade 3 (poorly differentiated) 8 or 9 points (Table 2).

**2.3. Immunohistochemistry.** P-cadherin immunorexpression was evaluated on sequential 3  $\mu$ m sections of each sample

on Dako REAL Capillary Gap Microscope Slides, Code. S2024 (75  $\mu$ m). The sections were dried in an oven at 56°C overnight. The tissues were deparaffinized, rehydrated, and treated with EDTA buffer (Zymed Ref. no. 00-5500, EDTA solution pH 8, 20x concentrate) for 2 cycles of 10 minutes at 900 W in a microwave oven for antigen retrieval. The immunohistochemical assay was performed using the modified avidin-biotin-peroxidase complex (ABC) method with a commercial detection system (Dako REAL Detection System Streptavidin Peroxidase (HRP) Dako REAL Detection System, Peroxidase/DAB+, Rabbit/Mouse, Code K5001). The slides were developed in an automated slide staining system (DAKO TechMate™ 500 Plus Biotek Solutions) in the histopathology laboratory of the “*Instituto Português de Oncologia de Coimbra Francisco Gentil*”, Coimbra, Portugal. A specific mouse antihuman monoclonal antibody against P-cadherin was used. The antibody (diluted 1 : 50) was directed at the extracellular domain of this adhesion molecule (clone 56, BD Transduction Laboratories, Lexington, Ky, USA).

Complementary monoclonal antibodies to assess the epithelial or myoepithelial phenotype of the cells were used on successive serial sections of selected samples. A specific mouse antihuman monoclonal antibody against cytokeratin AE1/AE3 (AE1/AE3, Chemicon International, Temecula, USA), diluted 1 : 1500, was used as an epithelial marker. A specific mouse antihuman monoclonal antibody against p63 protein (clone 4A4, Lab Vision Corporation - NeoMarkers, Fremont, USA), diluted 1 : 150, was used as a myoepithelial marker. Antigen retrieval for these antibodies was carried out by microwave oven treatment for 2 cycles of 10 minutes at 900 W in a 10 nM citrate buffer, pH 6.0.

Human nipple was used as positive control for P-cadherin and p63 protein antibodies. Human appendix was used as positive control for AE1/AE3 antibody. For negative controls, the primary antibody was replaced by mouse IgG1. Adjacent normal mammary tissues or skin were used as internal positive controls.

**2.4. Evaluation of P-Cadherin Immunolabelling.** The assessment of P-cadherin expression in feline mammary tissues was based on a semiquantitative analysis [8], according to the percentage of immunoreactive luminal epithelial cells, with a membranous and/or cytoplasmatic pattern of cellular distribution (aberrant pattern). The following scores were established to classify the tissue aberrant immunorexpression: 0: <10% positive cells (considered negative for P-cadherin immunostaining); 1: 10–25% positive cells; 2: 26–50% positive cells; 3: >50% positive cells.

**2.5. Statistical Methods.** Contingency tables and likelihood ratio chi-square test were used, with SAS/STAT, 1989 (SAS Institute Inc., Cary, NC, USA) and, in all instances, significance was set at  $P < 0.05$ .

### 3. Results

**3.1. P-Cadherin Expression.** The immunohistochemical results for P-cadherin expression are summarized in Table 3.

TABLE 3: Aberrant P-cadherin immunoreactivity in feline mammary tissues.

Mammary tissues	n	Aberrant P-cadherin immunoreactivity			
		0	1	2	3
Normal mammary gland	4	4 (100.00%)	0 (0.00%)	0 (0.00%)	0 (0.00%)
Lobular hyperplasia	3	3 (100.00%)	0 (0.00%)	0 (0.00%)	0 (0.00%)
Fibroadenomatous change	9	9 (100.00%)	0 (0.00%)	0 (0.00%)	0 (0.00%)
Simple adenoma	2	2 (100.00%)	0 (0.00%)	0 (0.00%)	0 (0.00%)
Fibroadenoma	3	3 (100.00%)	0 (0.00%)	0 (0.00%)	0 (0.00%)
Duct papilloma	1	1 (100.00%)	0 (0.00%)	0 (0.00%)	0 (0.00%)
Tubulopapillary carcinoma	18	6 (33.33%)	5 (27.78%)	4 (22.22%)	3 (16.67%)
Solid carcinoma	20	7 (35.00%)	5 (25.00%)	4 (20.00%)	4 (20.00%)
Cribriform carcinoma	1	1 (100.00%)	0 (0.00%)	0 (0.00%)	0 (0.00%)
Total	61	36 (59.02%)	10 (16.39%)	8 (13.11%)	7 (11.48%)

0: <10%; 1: 10–25%; 2: 25–50%; 3: >50%.

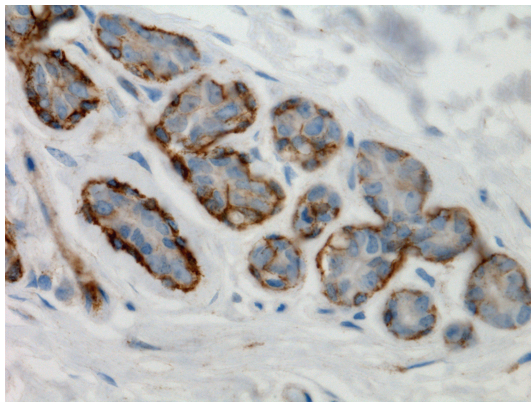


FIGURE 1: Normal mammary gland. Membranous and cytoplasmic P-cadherin immunoreactivity in myoepithelial cells (streptavidin-biotin-peroxidase method, 630x).

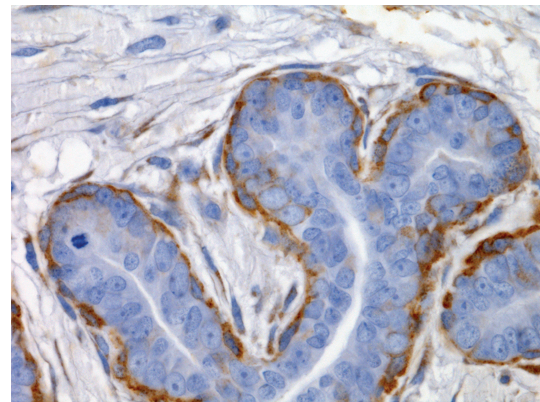


FIGURE 2: Fibroadenomatous change. Membranous and cytoplasmic P-cadherin immunoreactivity in myoepithelial cells (streptavidin-biotin-peroxidase method, 630x).

In normal nonlactating mammary glands, P-cadherin immunolabelling was restricted to myoepithelial cells (Figure 1). Hyperplastic mammary tissues showed a P-cadherin immunoexpression limited to myoepithelial cells (Figure 2), similar to the pattern observed in normal nonlactating mammary glands.

In benign tumours, P-cadherin immunoexpression was restricted to myoepithelial cells while in malignant tumours it was observed in luminal epithelial cells (membranous and/or cytoplasmic). This aberrant expression was observed in two thirds of malignant mammary tumours, and two thirds ( $n = 15$ ) of the positive ones had immunolabelling in more than one fourth of the cells (Figures 3 and 4). The cytoplasmic immunolabelling often showed a granular pattern (Figure 5). In eight malignant mammary tumours, P-cadherin immunostaining differed from area to area with a greater intensity and higher number of positive cells on the periphery of the tumour (Figure 6). Both solid and tubulopapillary malignant tumours showed aberrant expression of P-cadherin, while the single cribriform carcinoma showed negative immunostaining for P-cadherin.

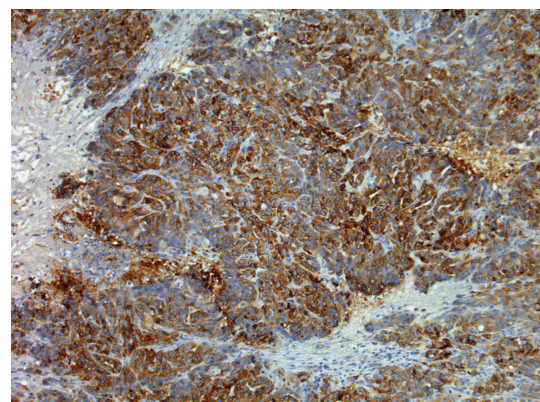


FIGURE 3: Solid carcinoma. Aberrant P-cadherin immunoreactivity in luminal epithelial cells (membranous and cytoplasmic) (streptavidin-biotin-peroxidase method, 100x).

Three lymph node metastases were studied (two from grade 1 tubulopapillary carcinomas and one from a grade 3 solid carcinoma). One metastasis from a solid carcinoma showed 10–25% of cells expressing P-cadherin, while in



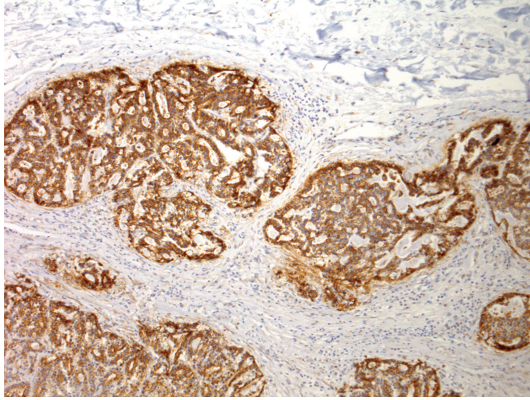


FIGURE 4: Tubulopapillary carcinoma. Aberrant P-cadherin immunoreactivity in luminal epithelial cells (membranous and cytoplasmic) (streptavidin-biotin-peroxidase method, 100x).

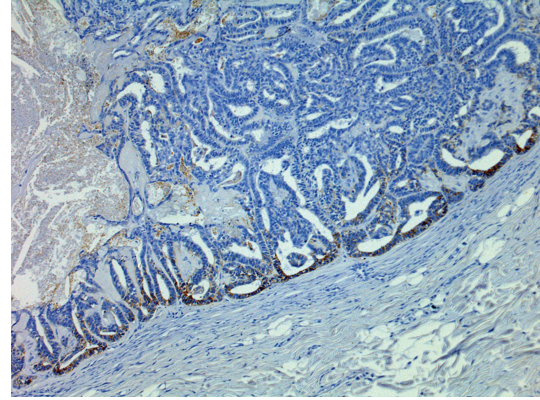


FIGURE 6: Tubulopapillary carcinoma. Strong aberrant P-cadherin immunoreactivity in the periphery of the tumour (streptavidin-biotin-peroxidase method, 100x).

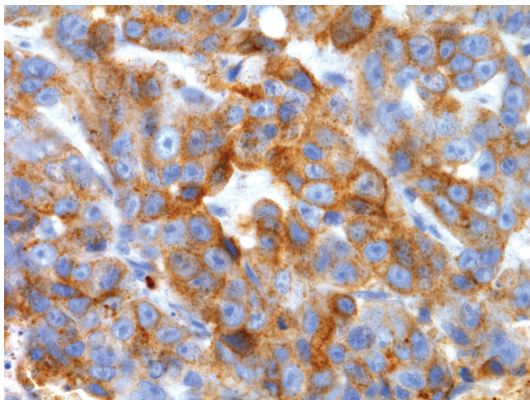


FIGURE 5: Solid carcinoma. Membranous and granular cytoplasmic aberrant P-cadherin immunoreactivity in luminal epithelial cells (streptavidin-biotin-peroxidase method, 630x).

the primary tumour more than 50% of the cells were immunoreactive. Both primary tubulopapillary carcinomas had 10–25% P-cadherin positive cells, while more than 50% of tumour cells in one lymph node and 25–50% in the other node expressed P-cadherin. Thus lymph node metastases from the tubulopapillary carcinomas had higher aberrant P-cadherin immunoreactivity than the primary tumours, while the opposite was seen in the solid carcinoma.

In normal and hyperplastic mammary glands as in benign mammary tumours there was positive immunolabelling for AE1/AE3 and p63, showing two different cell phenotypes, epithelial, and myoepithelial, respectively. In malignant mammary tumours there was only one type of cells, the luminal epithelial cells evidenced by AE1/AE3 immunoreactivity and there was no immunoreactivity to p63.

**3.2. Relationship between Aberrant P-Cadherin Expression, Histological Classification, and Tumour Grade.** Benign and malignant tumours diverged significantly with respect to aberrant P-cadherin immunoreactivity ( $P < 0.0001$ )

(Table 4). No significant statistical relationship between P-cadherin immunoreactivity and malignant histological type was observed, but a significant statistical relationship was observed between P-cadherin immunoreactivity and the histological grade of malignant tumours ( $P = 0.0132$ ) (Table 5). All grade 3 malignant tumours (poorly differentiated) showed more than 25% P-cadherin immunopositivity while most grades 1 and 2 showed less than 25% P-cadherin immunopositivity.

#### 4. Discussion

Cadherins are cell adhesion molecules important in the morphogenesis and maintenance of the normal tissue architecture. The control of cellular adhesion and motility is one of the crucial mechanisms responsible for the initiation and progression of tumours [21]. P-cadherin is a classical cadherin that has been implicated in human mammary carcinogenesis. Several studies on its immunoreactivity have demonstrated an association with biological aggressiveness [10, 12, 14–17, 22], since P-cadherin is frequently overexpressed in high-grade tumors being considered as a marker of poor prognosis in human breast cancer [12, 17, 23]. P-cadherin has been described as an inducer of cancer cell migration and invasion; the molecular mechanisms underlying this process seem to be related with signaling mediated by the P-cadherin juxtamembrane domain, the P-cadherin soluble form and the secretion of matrix metalloproteases [23–25].

Considering feline mammary tumours as promising models to achieve a better understanding of human breast carcinogenesis, P-cadherin was studied as a prognostic marker in these neoplasms. Immunohistochemical techniques were performed using an automated system which, according to Cassali et al. [26], results in improved quality, reproducibility, speed, and standardization.

In the present study, normal and hyperplastic mammary tissues, as well as benign lesions, showed P-cadherin immunoreactivity similar to that described in human mammary tissues [10, 12, 27], with immunoreactivity in the basal

TABLE 4: Relationship between aberrant P-cadherin immunoreactivity and mammary lesions.

Mammary lesions	n	Aberrant P-cadherin immunoreactivity				P
		0	1	2	3	
Hyperplasias	12	12 (100.00%)	0 (0.00%)	0 (0.00%)	0 (0.00%)	P = 0.0001
Benign tumours	6	6 (100.00%)	0 (0.00%)	0 (0.00%)	0 (0.00%)	
Malignant tumours	39	14 (35.90%)	10 (25.64%)	8 (20.51%)	7 (17.95%)	
Total	57	32 (56.14%)	10 (17.54%)	8 (14.04%)	7 (12.28%)	

0: <10%; 1: 10–25%; 2: 25–50%; 3: >50%.

TABLE 5: Relationship between aberrant P-cadherin immunoreactivity and histological grade of malignant tumours.

Histological grades	n	Aberrant P-cadherin immunoreactivity				P
		0	1	2	3	
Grade 1	17	4 (23.53%)	6 (35.29%)	4 (23.53%)	3 (17.65%)	P = 0.0132
Grade 2	17	10 (58.82%)	4 (23.53%)	2 (11.76%)	1 (5.88%)	
Grade 3	5	0 (0.00%)	0 (0.00%)	2 (40.00%)	3 (60.00%)	
Total	39	14 (35.90%)	10 (25.64%)	8 (20.51%)	7 (17.95%)	

0: <10%; 1: 10–25%; 2: 25–50%; 3: >50%.

cell layer of ductal and alveolar structures, that correspond morphologically to the myoepithelium. This is similar to the pattern described by other authors in normal and hyperplastic canine mammary tissues [8, 28]. Feline benign tumours were negative for epithelial P-cadherin expression (aberrant pattern), in opposition to canine benign mammary tumours, where Gama et al. [8] observed an aberrant epithelial expression in 43%, with 10 to 25% immunoreactive cells.

P-cadherin is not expressed in epithelial cells of the normal mammary gland. However in feline malignant mammary tumours, this molecule was aberrantly detected in epithelial cells. Sixty four percent (n = 25) of the feline malignant mammary tumours showed aberrant P-cadherin expression in luminal epithelial cells. This expression pattern is in accordance with previous studies of human breast cancer [10, 12–14, 16, 17, 29] and canine mammary tumours [8]. In fact, Gama et al. [8] observed aberrant P-cadherin epithelial immunoreactivity in 64% of the studied canine malignant tumours, a percentage similar to that observed in the present study. As observed in women [14, 17] P-cadherin has a membranous immunostaining pattern, generally associated with cytoplasmic staining as well.

Peralta Soler et al., [29] demonstrated that P-cadherin immunoreactivity in human breast carcinomas was mostly in cells at the periphery of the tumour and in invading nests. Likewise, in our study we observed a higher P-cadherin expression in the outside edge of the tumours.

P-cadherin has been considered a progression marker of human breast cancer [12]. Some theories have been proposed to explain its aberrant expression [12, 29–31] and the mechanisms underlying the invasive behavior of P-cadherin-expressing breast tumours [25]. The biological meaning of this immunoreactivity in mammary carcinogenesis, however, is still poorly understood.

In feline normal mammary gland, P-cadherin is expressed only by the myoepithelial cells, suggesting that the presence of this molecule in feline mammary malignant tumours could point to a myoepithelial differentiation. We

used the molecular marker p63 protein to explore this hypothesis since p63 is described as a highly sensitive and specific myoepithelial cell marker in canine [32, 33] and human breast tissues [34, 35], while the pancytokeratin AE1/AE3 was applied as an epithelial cell marker [8, 33, 36].

In the normal feline mammary glands, as well as in hyperplastic lesions and benign tumours, p63 and P-cadherin were coexpressed in the same cells, showing that P-cadherin was expressed exclusively by myoepithelial cells in these tissues. In malignant mammary tumours, however, P-cadherin positive cells were negative for p63 and positive for AE1/AE3. These results are in accordance with those described in canine [8] and human [10, 12] mammary tumours and demonstrate that, in feline mammary carcinomas, the expression of P-cadherin cannot be considered a marker of myoepithelial differentiation.

No relationship was seen between the tumours histological type and P-cadherin expression, contrary to the findings in canine [8] and human mammary tumours [10, 11].

In this study, P-cadherin immunoreactivity in neoplastic epithelial cells was observed exclusively in malignant mammary tumours and this aberrant expression was strongly related with histological grade (P = 0.0001), as described in canine mammary tumours [8, 9]. In fact, all grade 3 carcinomas expressed P-cadherin by more than one half of its cells. Studies in human breast cancer demonstrated a significant correlation between P-cadherin expression and high histological grade [10, 12–17, 29], and one study [13] revealed that most of the P-cadherin expressing carcinomas were grade 3.

In women with breast cancer, the aberrant expression of P-cadherin has been associated with aggressive behaviour [14, 15] and worse prognosis [4, 11, 14, 15, 17, 22, 23, 29, 37–39], and thus may represent a promising antibody therapeutic target [22].

This study in feline mammary carcinomas suggests a relationship between aberrant immunoreactivity of P-cadherin, malignant phenotype, and histological grade. However,

these results should be confirmed with a greater number of cases and to conclusively define aberrant P-cadherin immunorexpression as a marker of biological aggressiveness and a prognostic indicator, it will be necessary to study larger populations in prospective follow-up studies.

### Conflict of Interests

This is an original work, and so has not been published, in part or whole, nor is it being considered for publication in any other journal. In addition, its submission to this journal is approved by all authors who alone are responsible for the content and writing of the paper.

### Acknowledgments

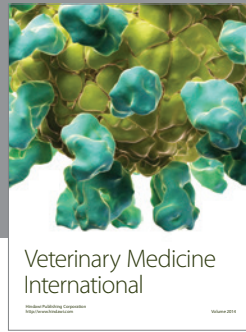
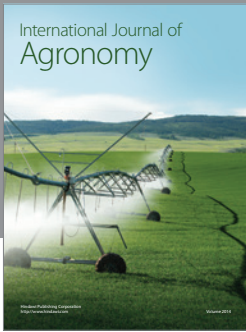
The authors thank Mr. Francisco Seco (EUVG) for providing the sections and HE staining. They thank the IPOCFG technicians for helping with the immunohistochemical assay. They also thank Célia Lopes (ICBAS-UP) for helping with the archive material. Very special thanks to Dr. Paulo Figueiredo (IPOCFG) for the precious help with the photographs.

### References

- [1] B. D. Angst, C. Marozzi, and A. I. Magee, "The cadherin superfamily: diversity in form and function," *Journal of Cell Science*, vol. 114, no. 4, pp. 629–641, 2001.
- [2] M. Takeichi, "Cadherin cell adhesion receptors as a morphogenetic regulator," *Science*, vol. 251, no. 5000, pp. 1451–1455, 1991.
- [3] M. Takeichi, "Morphogenetic roles of classic cadherins," *Current Opinion in Cell Biology*, vol. 7, no. 5, pp. 619–627, 1995.
- [4] M. J. Wheelock, A. P. Soler, and K. A. Knudsen, "Cadherin junctions in mammary tumors," *Journal of Mammary Gland Biology and Neoplasia*, vol. 6, no. 3, pp. 275–285, 2001.
- [5] F. Nollet, P. Kools, and F. Van Roy, "Phylogenetic analysis of the cadherin superfamily allows identification of six major subfamilies besides several solitary members," *Journal of Molecular Biology*, vol. 299, no. 3, pp. 551–572, 2000.
- [6] P. Cowin, T. M. Rowlands, and S. J. Hatsell, "Cadherins and catenins in breast cancer," *Current Opinion in Cell Biology*, vol. 17, no. 5, pp. 499–508, 2005.
- [7] C. W. Daniel, P. Strickland, and Y. Friedmann, "Expression and functional role of E- and P-cadherins in mouse mammary ductal morphogenesis and growth," *Developmental Biology*, vol. 169, no. 2, pp. 511–519, 1995.
- [8] A. Gama, J. Paredes, A. Albergaria, F. Gärtner, and F. Schmitt, "P-cadherin expression in canine mammary tissues," *Journal of Comparative Pathology*, vol. 130, no. 1, pp. 13–20, 2004.
- [9] A. Gama, J. Paredes, F. Gärtner, A. Alves, and F. Schmitt, "Expression of E-cadherin, P-cadherin and  $\beta$ -catenin in canine malignant mammary tumours in relation to clinicopathological parameters, proliferation and survival," *The Veterinary Journal*, vol. 177, no. 1, pp. 45–53, 2008.
- [10] J. Palacios, N. Benito, A. Pizarro et al., "Anomalous expression of P-cadherin in breast carcinoma: correlation with E-cadherin expression and pathological features," *American Journal of Pathology*, vol. 146, no. 3, pp. 605–612, 1995.
- [11] J. Paredes, A. L. Correia, A. S. Ribeiro, A. Albergaria, F. Milanezi, and F. C. Schmitt, "P-cadherin expression in breast cancer: a review," *Breast Cancer Research*, vol. 9, no. 5, p. 214, 2007.
- [12] C. Gamallo, G. Moreno-Bueno, D. Sarrió, F. Calero, D. Hardisson, and J. Palacios, "The prognostic significance of P-cadherin in infiltrating ductal breast carcinoma," *Modern Pathology*, vol. 14, no. 7, pp. 650–654, 2001.
- [13] A. Kovács, J. Dhillon, and R. A. Walker, "Expression of P-cadherin, but not E-cadherin or N-cadherin, relates to pathological and functional differentiation of breast carcinomas," *Journal of Clinical Pathology*, vol. 56, no. 6, pp. 318–322, 2003.
- [14] J. Paredes, F. Milanezi, J. S. Reis-Filho, D. Leitão, D. Athanazio, and F. Schmitt, "Aberrant P-cadherin expression: is it associated with estrogen-independent growth in breast cancer?" *Pathology Research and Practice*, vol. 198, no. 12, pp. 795–801, 2002.
- [15] J. C. A. F. Paredes, M. F. G. Milanezi, J. S. Reis-Filho et al., "Correlação entre as expressões de P-caderina e de receptores de estrógeno no câncer da mama" "Correlation between P-cadherin and estrogen receptor expression in breast cancer," *Jornal Brasileiro de Patologia e Medicina Laboratorial*, vol. 38, pp. 307–331, 2002.
- [16] J. Paredes, F. Milanezi, L. Viegas, I. Amendoeira, and F. Schmitt, "P-cadherin expression is associated with high-grade ductal carcinoma in situ of the breast," *Virchows Archiv*, vol. 440, no. 1, pp. 16–21, 2002.
- [17] J. Paredes, A. Albergaria, J. T. Oliveira, C. Jeronimo, F. Milanezi, and F. C. Schmitt, "P-cadherin overexpression is an indicator of clinical outcome in invasive breast carcinomas and is associated with CDH3 promoter hypomethylation," *Clinical Cancer Research*, vol. 11, no. 16, pp. 5869–5877, 2005.
- [18] W. Misdorp and K. Weijer, "Animal model of human disease. Breast cancer," *American Journal of Pathology*, vol. 98, no. 2, pp. 573–576, 1980.
- [19] W. Misdorp, R. W. Else, E. Hellmén, and T. P. Lipscomb, *Histological Classification of Mammary Tumors of the Dog and the Cat*, vol. 7, Armed Forces Institute of Pathology in cooperation with the American Registry of Pathology and The World Health Organization Collaborating Center for Worldwide Reference on Comparative Oncology, Washington, DC, USA, 2nd edition, 1999.
- [20] C. W. Elston and I. O. Ellis, "Assessment of histological grade," in *Systemic Pathology: The Breast*, C. W. Elston and I. O. Ellis, Eds., vol. 13, Churchill Livingstone, Edinburgh, UK, 3rd edition, 1998.
- [21] N. Pečina-Šlaus, "Tumor suppressor gene E-cadherin and its role in normal and malignant cells," *Cancer Cell International*, vol. 3, article 17, 2003.
- [22] G. Turashvili, S. E. McKinney, O. Goktepe et al., "P-cadherin expression as a prognostic biomarker in a 3992 case tissue microarray series of breast cancer," *Modern Pathology*, vol. 24, no. 1, pp. 64–81, 2011.
- [23] A. Albergaria, A. S. Ribeiro, A. F. Vieira et al., "P-cadherin role in normal breast development and cancer," *The International Journal of Developmental Biology*, vol. 55, pp. 811–822, 2011.
- [24] J. Paredes, A. L. Correia, A. S. Ribeiro, F. Milanezi, J. Cameselle-Teijeiro, and F. C. Schmitt, "Breast carcinomas that co-express E- and P-cadherin are associated with p120-catenin cytoplasmic localisation and poor patient survival," *Journal of Clinical Pathology*, vol. 61, no. 7, pp. 856–862, 2008.
- [25] A. S. Ribeiro, A. Albergaria, B. Sousa et al., "Extracellular cleavage and shedding of P-cadherin: a mechanism underlying



- the invasive behaviour of breast cancer cells,” *Oncogene*, vol. 29, no. 3, pp. 392–402, 2010.
- [26] G. D. Cassali, P. Silva, A. Réma et al., “A new methodology for the improvement of diagnostic immunohistochemistry in canine veterinary pathology: automated system using human monoclonal and polyclonal antibodies,” *Arquivo Brasileiro de Medicina Veterinária e Zootecnia*, vol. 53, no. 3, pp. 326–331, 2001.
- [27] A. Kovács and R. A. Walker, “P-cadherin as a marker in the differential diagnosis of breast lesions,” *Journal of Clinical Pathology*, vol. 56, no. 2, pp. 139–141, 2003.
- [28] A. Gama, J. Paredes, M. F. Milanezi, J. S. Reis-Filho, F. Gartner, and F. C. Schmitt, “P-cadherin expression in canine lactating mammary gland,” *Journal of Cellular Biochemistry*, vol. 86, no. 3, pp. 420–421, 2002.
- [29] A. Peralta Soler, K. A. Knudsen, H. Salazar, A. C. Han, and A. A. Keshgegian, “P-cadherin expression in breast carcinoma indicates poor survival,” *Cancer*, vol. 86, pp. 1263–1272, 1999.
- [30] A. Albergaria, A. S. Ribeiro, S. Pinho et al., “ICI 182,780 induces P-cadherin overexpression in breast cancer cells through chromatin remodelling at the promoter level: a role for C/EBP $\beta$  in CDH3 gene activation,” *Human Molecular Genetics*, vol. 19, no. 13, pp. 2554–2566, 2010.
- [31] Y. Shimoyama and S. Hirohashi, “Expression of E- and P-cadherin in gastric carcinomas,” *Cancer Research*, vol. 51, no. 8, pp. 2185–2192, 1991.
- [32] A. Espinosa Los de Monteros, M. Y. Millán, J. Ordás, L. Carrasco, C. Reymundo, and J. Martín Las de Mulas, “Immunolocalization of the smooth muscle-specific protein calponin in complex and mixed tumors of the mammary gland of the dog: assessment of the morphogenetic role of the myoepithelium,” *Veterinary Pathology*, vol. 39, no. 2, pp. 247–256, 2002.
- [33] A. Gama, A. Alves, F. Gartner, and F. Schmitt, “p63: a novel myoepithelial cell marker in canine mammary tissues,” *Veterinary Pathology*, vol. 40, no. 4, pp. 412–420, 2003.
- [34] M. A. Deugnier, J. Teulière, M. M. Faraldo, J. P. Thiery, and M. A. Glukhova, “The importance of being a myoepithelial cell,” *Breast Cancer Research*, vol. 4, no. 6, pp. 224–230, 2002.
- [35] M. P. Foschini and V. Eusebi, “Carcinomas of the breast showing myoepithelial cell differentiation,” *Virchows Archiv*, vol. 432, no. 4, pp. 303–310, 1998.
- [36] L. N. Z. Ramalho, A. Ribeiro-Silva, G. D. Cassali, and S. Zucoloto, “The expression of p63 and cytokeratin 5 in mixed tumors of the canine mammary gland provides new insights into the histogenesis of these neoplasms,” *Veterinary Pathology*, vol. 43, no. 4, pp. 424–429, 2006.
- [37] A. C. Han, “Role of Cadherins in Breast Cancer,” in *Handbook of Immunohistochemistry and in situ Hybridization of Human Carcinomas*, M. A. Hayat, Ed., vol. 1, Elsevier Academic Press, Burlington, Vt, USA, 2004.
- [38] A. C. Han, A. P. Soler, K. A. Knudsen, and H. Salazar, “Distinct cadherin profiles in special variant carcinomas and other tumors of the breast,” *Human Pathology*, vol. 30, no. 9, pp. 1035–1039, 1999.
- [39] K. A. Knudsen and M. J. Wheelock, “Cadherins and the mammary gland,” *Journal of Cellular Biochemistry*, vol. 95, no. 3, pp. 488–496, 2005.



# Hindawi

Submit your manuscripts at  
<http://www.hindawi.com>

